

**КОНЦЕРТНА ЗАЛА „ДОБРИЧ“- ОСНОВЕН РЕМОНТ И ОБНОВЯВАНЕ
В УПИ I, КВ.45,НА ЦГЧ ГР.ДОБРИЧ**

Content

Project 0

Site 1

Building 1

Storey 1

Инсталационно

Summary..... 3

Luminaire layout plan..... 4

Коридор

Summary..... 5

Luminaire layout plan..... 6

Котелно

Summary..... 7

Luminaire layout plan..... 8

Склад 1

Summary..... 9

Luminaire layout plan..... 10

Склад 2

Summary..... 11

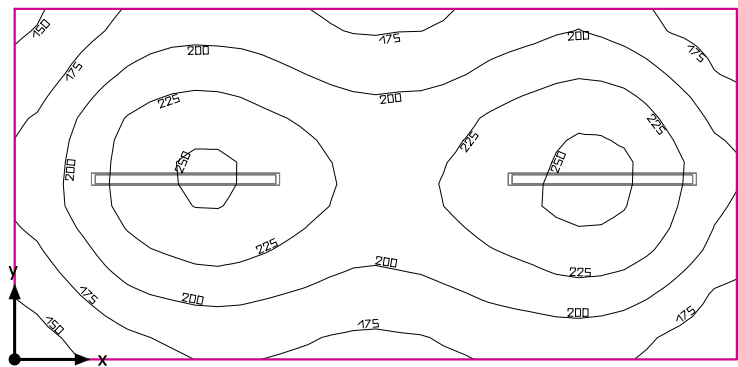
Luminaire layout plan..... 12

Сутерен

Summary..... 13

Luminaire layout plan..... 14

Инсталационно



Clearance height: 3.400 m, Reflection factors: Ceiling 70.0%, Walls 50.0%, Floor 20.0%, Maintenance factor: 0.80

Workplane

Surface	Result	Average (Target)	Min	Max	Min/average	Min/max
1 Workplane (Инсталационно)	Perpendicular illuminance (adaptive) [lx] * Height: 0.000 m, Wall zone: 0.000 m	206 (≥ 100)	139	256	0.67	0.54

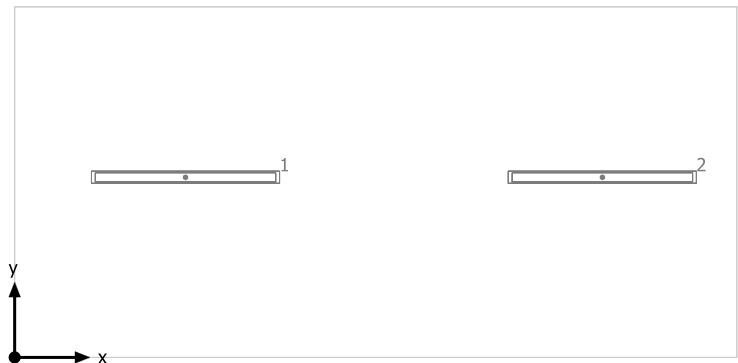
# Luminaire	Φ(Luminaire) [lm]	Power [W]	Luminous efficacy [lm/W]
2 V-TAC - 6200 V-TAC 36W LED Waterproof Lamp 1200mm 4500K	2800	36.0	77.8
Total via all luminaires	5600	72.0	77.8

Lighting power density: $6.44 \text{ W/m}^2 = 3.12 \text{ W/m}^2/100 \text{ lx}$ (Floor area of room 11.18 m^2)

Consumption: 79 kWh/a of maximum 400 kWh/a

The energy consumption quantities do not take into account light scenes and their dimming levels.

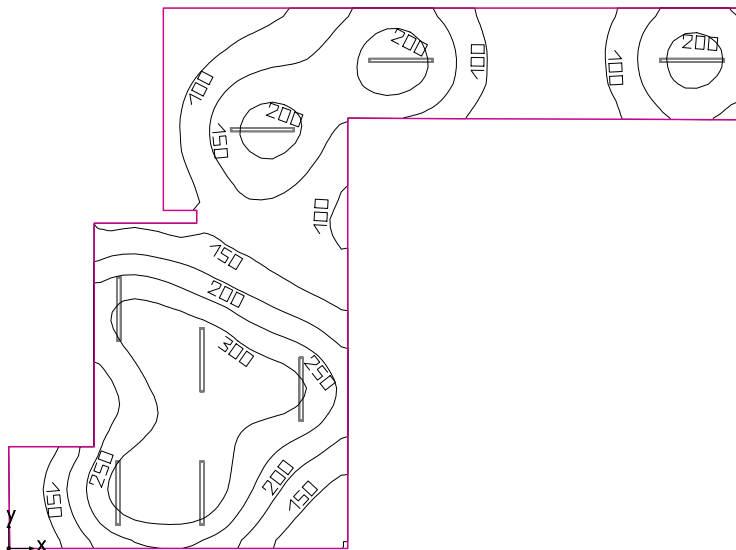
Инсталационно



V-TAC 6200 V-TAC 36W LED Waterproof Lamp 1200mm 4500K

No.	X [m]	Y [m]	Mounting height [m]	Maintenance factor
1	1.136	1.197	2.800	0.80
2	3.906	1.197	2.800	0.80

Коридор



Clearance height: 2.800 m, Reflection factors: Ceiling 70.0%, Walls 50.0%, Floor 20.0%, Maintenance factor: 0.80

Workplane

Surface	Result	Average (Target)	Min	Max	Min/average	Min/max
1 Workplane (Коридор)	Perpendicular illuminance (adaptive) [lx] * Height: 0.800 m, Wall zone: 0.000 m	189 (≥ 100)	54.8	349	0.29	0.16

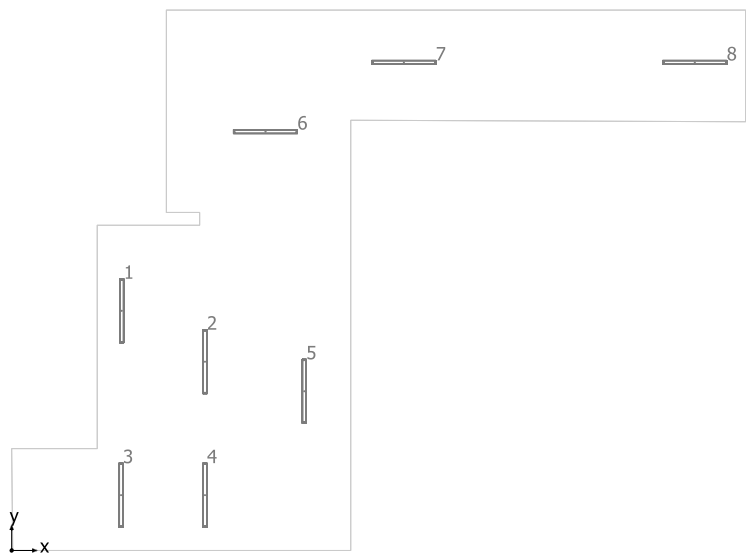
# Luminaire	Φ(Luminaire) [lm]	Power [W]	Luminous efficacy [lm/W]
8 V-TAC - 6200 V-TAC 36W LED Waterproof Lamp 1200mm 4500K	2800	36.0	77.8
Total via all luminaires	22400	288.0	77.8

Lighting power density: $4.34 \text{ W/m}^2 = 2.29 \text{ W/m}^2/100 \text{ lx}$ (Floor area of room 66.39 m^2)

Consumption: 550 kWh/a of maximum 2350 kWh/a

The energy consumption quantities do not take into account light scenes and their dimming levels.

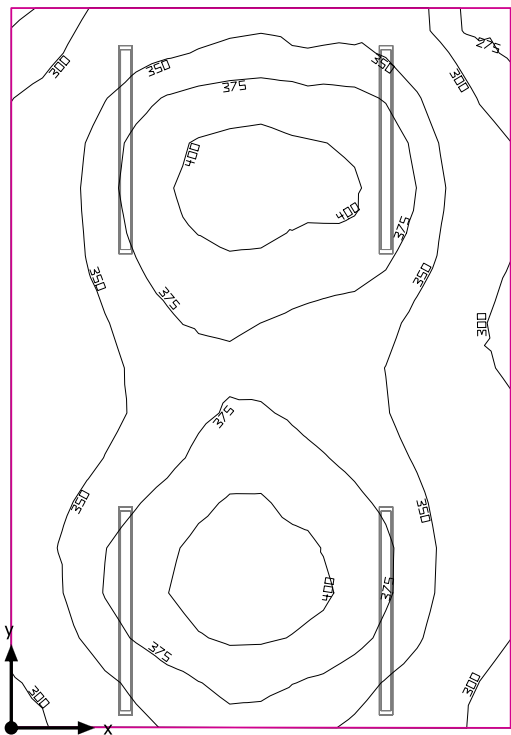
Коридор



V-TAC 6200 V-TAC 36W LED Waterproof Lamp 1200mm 4500K

No.	X [m]	Y [m]	Mounting height [m]	Maintenance factor
1	2.149	4.680	2.800	0.80
2	3.774	3.686	2.800	0.80
3	2.136	1.080	2.800	0.80
4	3.774	1.080	2.800	0.80
5	5.713	3.108	2.800	0.80
6	4.955	8.179	2.800	0.80
7	7.657	9.528	2.800	0.80
8	13.337	9.528	2.800	0.80

Котелно



Clearance height: 3.400 m, Reflection factors: Ceiling 70.0%, Walls 50.0%, Floor 20.0%, Maintenance factor: 0.80

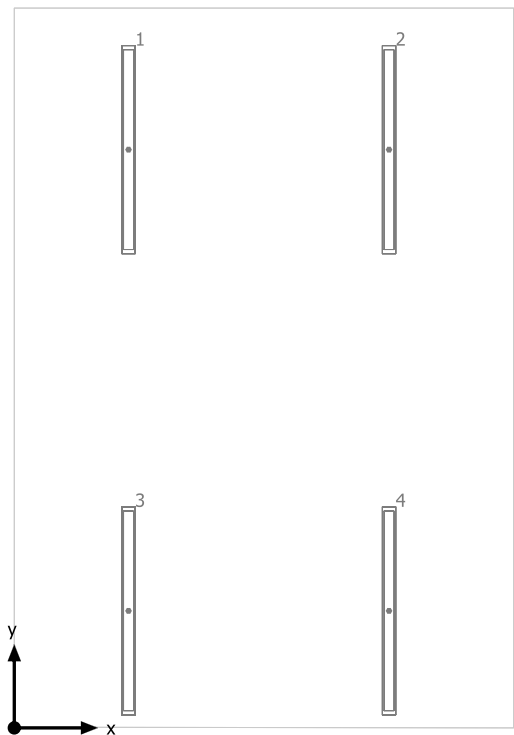
Workplane

Surface	Result	Average (Target)	Min	Max	Min/average	Min/max
1 Workplane (Котелно)	Perpendicular illuminance (adaptive) [lx] * Height: 0.800 m, Wall zone: 0.000 m	357 (≥ 200)	268	414	0.75	0.65

# Luminaire	Φ(Luminaire) [lm]	Power [W]	Luminous efficacy [lm/W]
4 V-TAC - 6200 V-TAC 36W LED Waterproof Lamp 1200mm 4500K	2800	36.0	77.8
Total via all luminaires	11200	144.0	77.8

Lighting power density: 11.11 W/m² = 3.11 W/m²/100 lx (Floor area of room 12.97 m²)
Consumption: 280 kWh/a of maximum 500 kWh/a
The energy consumption quantities do not take into account light scenes and their dimming levels.

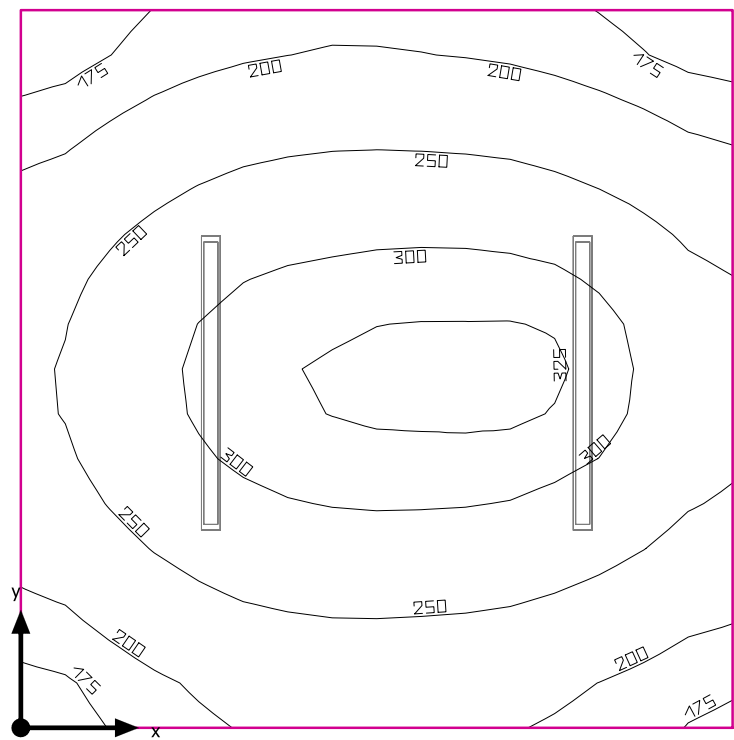
Котелно



V-TAC 6200 V-TAC 36W LED Waterproof Lamp 1200mm 4500K

No.	X [m]	Y [m]	Mounting height [m]	Maintenance factor
1	0.686	3.474	2.800	0.80
2	2.251	3.474	2.800	0.80
3	0.686	0.703	2.800	0.80
4	2.251	0.703	2.800	0.80

Склад 1



Clearance height: 3.400 m, Reflection factors: Ceiling 70.0%, Walls 50.0%, Floor 20.0%, Maintenance factor: 0.80

Workplane

Surface	Result	Average (Target)	Min	Max	Min/average	Min/max
1 Workplane (Склад 1)	Perpendicular illuminance (adaptive) [lx] * Height: 0.800 m, Wall zone: 0.000 m	251 (≥ 200)	160	332	0.64	0.48

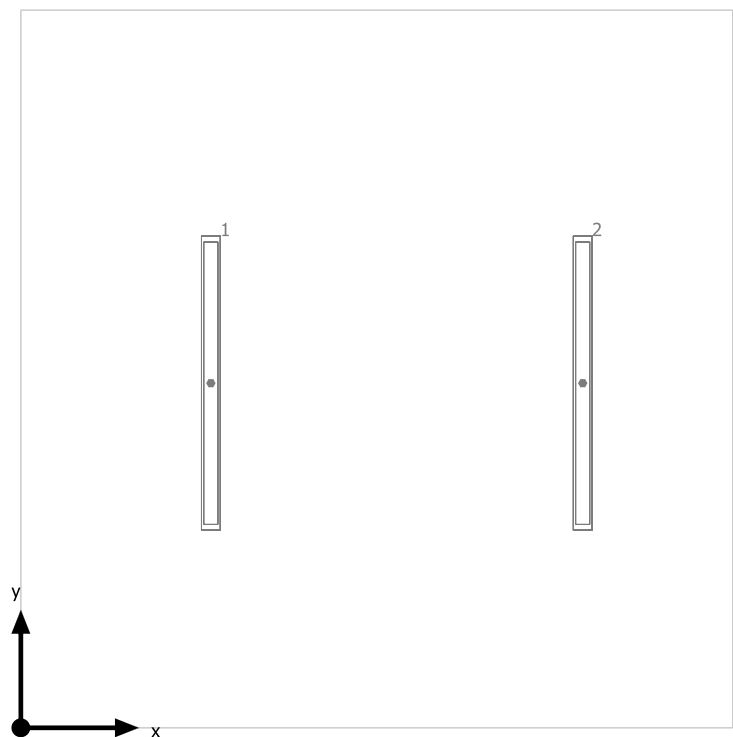
# Luminaire	Φ(Luminaire) [lm]	Power [W]	Luminous efficacy [lm/W]
2 V-TAC - 6200 V-TAC 36W LED Waterproof Lamp 1200mm 4500K	2800	36.0	77.8
Total via all luminaires	5600	72.0	77.8

Lighting power density: 7.80 W/m² = 3.10 W/m²/100 lx (Floor area of room 9.23 m²)

Consumption: 12 kWh/a of maximum 350 kWh/a

The energy consumption quantities do not take into account light scenes and their dimming levels.

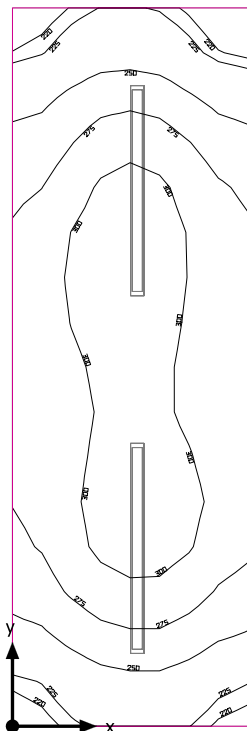
Склад 1



V-TAC 6200 V-TAC 36W LED Waterproof Lamp 1200mm 4500K

No.	X [m]	Y [m]	Mounting height [m]	Maintenance factor
1	0.808	1.465	2.800	0.80
2	2.388	1.465	2.800	0.80

Склад 2



Clearance height: 3.400 m, Reflection factors: Ceiling 70.0%, Walls 50.0%, Floor 20.0%, Maintenance factor: 0.80

Workplane

Surface	Result	Average (Target)	Min	Max	Min/average	Min/max
1 Workplane (Склад 2)	Perpendicular illuminance (adaptive) [lx] * Height: 0.800 m, Wall zone: 0.000 m	276 (≥ 200)	212	313	0.77	0.68

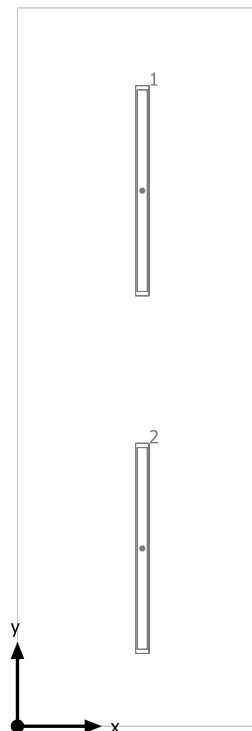
# Luminaire	Φ(Luminaire) [lm]	Power [W]	Luminous efficacy [lm/W]
2 V-TAC - 6200 V-TAC 36W LED Waterproof Lamp 1200mm 4500K	2800	36.0	77.8
Total via all luminaires	5600	72.0	77.8

Lighting power density: 12.03 W/m² = 4.36 W/m²/100 lx (Floor area of room 5.98 m²)

Consumption: 12 kWh/a of maximum 250 kWh/a

The energy consumption quantities do not take into account light scenes and their dimming levels.

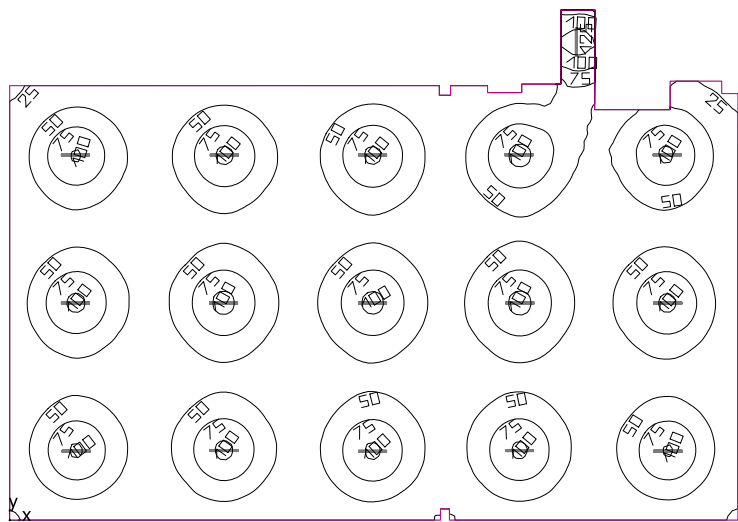
Склад 2



V-TAC 6200 V-TAC 36W LED Waterproof Lamp 1200mm 4500K

No.	X [m]	Y [m]	Mounting height [m]	Maintenance factor
1	0.743	3.187	2.800	0.80
2	0.743	1.058	2.800	0.80

Сутерен



Clearance height: 2.800 m, Reflection factors: Ceiling 70.0%, Walls 50.0%, Floor 20.0%, Maintenance factor: 0.80

Workplane

Surface	Result	Average (Target)	Min	Max	Min/average	Min/max
1 Workplane (Сутерен)	Perpendicular illuminance (adaptive) [lx] * Height: 0.000 m, Wall zone: 0.000 m	53.3 (≥ 50.0)	22.2	133	0.42	0.17

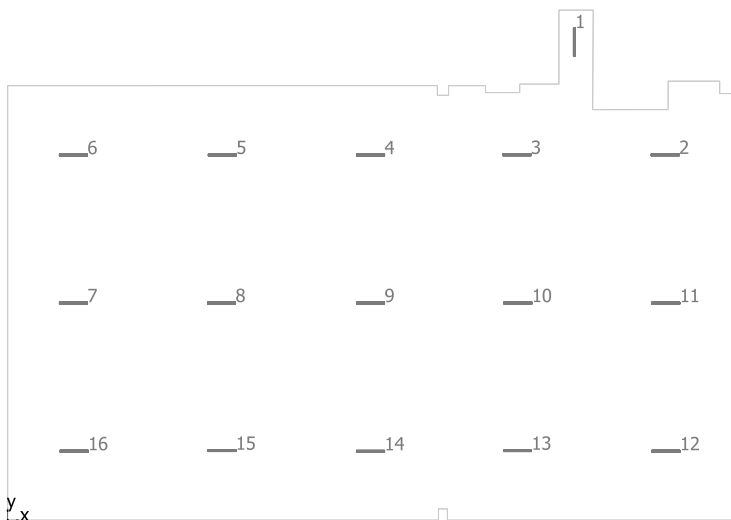
#	Luminaire	Φ(Luminaire) [lm]	Power [W]	Luminous efficacy [lm/W]
16	V-TAC - 6200 V-TAC 36W LED Waterproof Lamp 1200mm 4500K	2800	36.0	77.8
Total via all luminaires		44800	576.0	77.8

Lighting power density: 0.91 W/m² = 1.71 W/m²/100 lx (Floor area of room 631.11 m²)

Consumption: 630 kWh/a of maximum 22100 kWh/a

The energy consumption quantities do not take into account light scenes and their dimming levels.

Сутерен



V-TAC 6200 V-TAC 36W LED Waterproof Lamp 1200mm 4500K

No.	X [m]	Y [m]	Mounting height [m]	Maintenance factor
1	25.288	21.331	2.800	0.80
2	29.344	16.301	2.800	0.80
3	22.729	16.301	2.800	0.80
4	16.194	16.290	2.800	0.80
5	9.581	16.299	2.800	0.80
6	2.935	16.290	2.800	0.80
7	2.935	9.690	2.800	0.80
8	9.544	9.690	2.800	0.80
9	16.193	9.691	2.800	0.80
10	22.771	9.690	2.800	0.80
11	29.370	9.686	2.800	0.80
12	29.377	3.079	2.800	0.80
13	22.752	3.100	2.800	0.80
14	16.194	3.074	2.800	0.80
15	9.557	3.101	2.800	0.80
16	2.967	3.079	2.800	0.80

Content

Project 1

Site 1

Building 1

Storey 1

Аусгус

Summary..... 4

Luminaire layout plan..... 5

Гардеробна

Summary..... 6

Luminaire layout plan..... 7

Гардеробна

Summary..... 8

Luminaire layout plan..... 9

Изложбена част

Summary..... 10

Luminaire layout plan..... 11

Каса Портierer

Summary..... 12

Luminaire layout plan..... 13

Килер

Summary..... 14

Luminaire layout plan..... 15

Килер

Summary..... 16

Luminaire layout plan..... 17

Колоната

Summary..... 18

Luminaire layout plan..... 19

Коридор

Summary..... 20

Luminaire layout plan..... 21

Коридор

Summary..... 22

Luminaire layout plan..... 23

Коридор

Summary..... 24

Luminaire layout plan..... 25

Коридор

Summary..... 26

Luminaire layout plan..... 27

Персонал

Summary..... 28

Luminaire layout plan..... 29

Персонал

Summary..... 30

Luminaire layout plan..... 31

Персонал

Summary..... 32

Luminaire layout plan..... 33

Персонал

Summary..... 34

Luminaire layout plan..... 35

Предверие тоалетна инвалиди

Summary..... 36

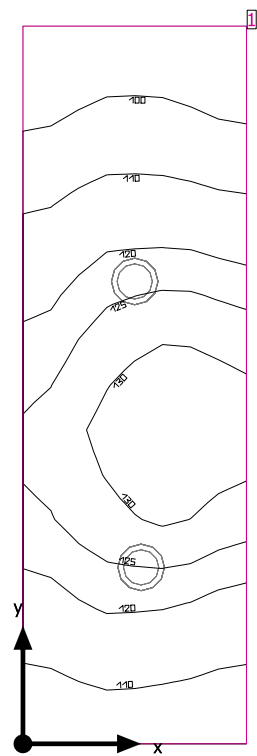
Luminaire layout plan..... 37

Предверие тоалетна мъже

Summary..... 38

Luminaire layout plan.....	39
Стълбище	
Summary.....	40
Luminaire layout plan.....	41
Стълбище	
Summary.....	42
Luminaire layout plan.....	43
Тоалетна жени	
Summary.....	44
Luminaire layout plan.....	45
Тоалетна инвалиди	
Summary.....	46
Luminaire layout plan.....	47
Тоалетна мъже	
Summary.....	48
Luminaire layout plan.....	49
Фойе	
Summary.....	50
Luminaire layout plan.....	51
Фойе	
Summary.....	52
Luminaire layout plan.....	53

Aycryc



Clearance height: 2.800 m, Reflection factors: Ceiling 70.0%, Walls 50.0%, Floor 20.0%, Maintenance factor: 0.80

Workplane

Surface	Result	Average (Target)	Min	Max	Min/average	Min/max
1 Workplane (Aycryc)	Perpendicular illuminance (adaptive) [lx] Height: 0.000 m, Wall zone: 0.000 m	117 (≥ 100)	91.8	133	0.78	0.69

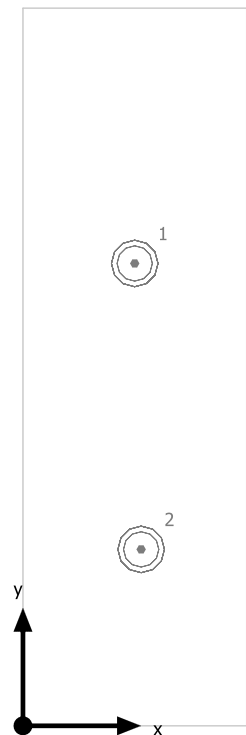
#	Luminaire	Φ(Luminaire) [lm]	Power [W]	Luminous efficacy [lm/W]
2	V-TAC - 4759 V-TAC 18W LED Panel Downlight Glass Round 6000K	1260	18.0	70.0
Total via all luminaires		2520	36.0	70.0

Lighting power density: 12.42 W/m² = 10.66 W/m²/100 lx (Floor area of room 2.90 m²)

Consumption: 40 kWh/a of maximum 150 kWh/a

The energy consumption quantities do not take into account light scenes and their dimming levels.

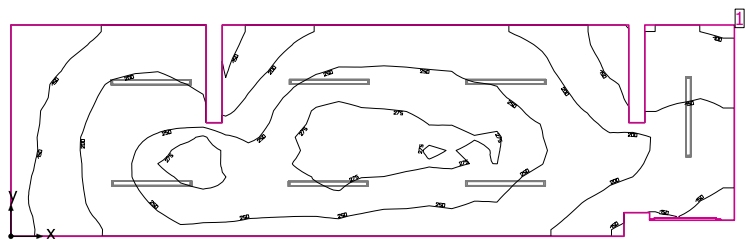
Aycryc



V-TAC 4759 V-TAC 18W LED Panel Downlight Glass Round 6000K

No.	X [m]	Y [m]	Mounting height [m]	Maintenance factor
1	0.475	1.965	2.800	0.80
2	0.502	0.750	2.800	0.80

Гардеробна



Clearance height: 2.800 m, Reflection factors: Ceiling 70.0%, Walls 50.0%, Floor 20.0%, Maintenance factor: 0.80

Workplane

Surface	Result	Average (Target)	Min	Max	Min/average	Min/max
1 Workplane (Гардеробна)	Perpendicular illuminance (adaptive) [lx] Height: 0.000 m, Wall zone: 0.000 m	214 (≥ 200)	97.1	287	0.45	0.34

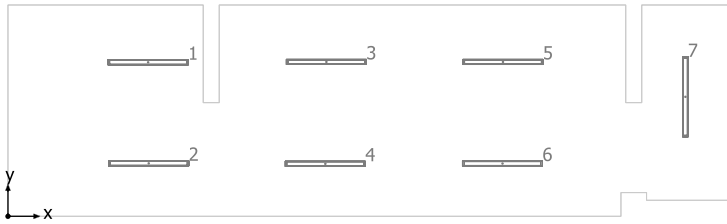
#	Luminaire	Φ(Luminaire) [lm]	Power [W]	Luminous efficacy [lm/W]
7	V-TAC - 6200 V-TAC 36W LED Waterproof Lamp 1200mm 4500K	2800	36.0	77.8
Total via all luminaires		19600	252.0	77.8

Lighting power density: 6.99 W/m² = 3.26 W/m²/100 lx (Floor area of room 36.05 m²)

Consumption: 170 - 280 kWh/a of maximum 1300 kWh/a

The energy consumption quantities do not take into account light scenes and their dimming levels.

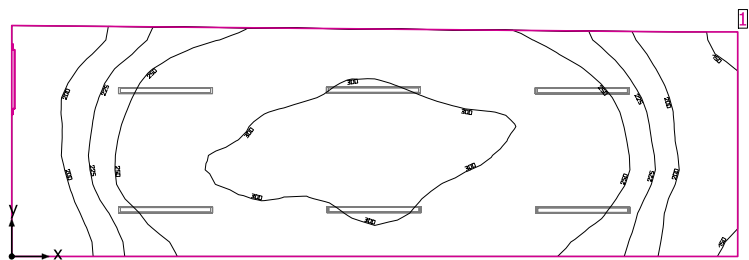
Гардеробна



V-TAC 6200 V-TAC 36W LED Waterproof Lamp 1200mm 4500K

No.	X [m]	Y [m]	Mounting height [m]	Maintenance factor
1	2.189	2.405	2.800	0.80
2	2.199	0.827	2.800	0.80
3	4.974	2.411	2.800	0.80
4	4.957	0.819	2.800	0.80
5	7.732	2.411	2.800	0.80
6	7.725	0.824	2.800	0.80
7	10.582	1.865	2.800	0.80

Гардеробна



Clearance height: 2.800 m, Reflection factors: Ceiling 70.0%, Walls 50.0%, Floor 50.0%, Maintenance factor: 0.80

Workplane

Surface	Result	Average (Target)	Min	Max	Min/average	Min/max
1 Workplane (Гардеробна)	Perpendicular illuminance (adaptive) [lx] Height: 0.000 m, Wall zone: 0.000 m	254 (≥ 200)	140	321	0.55	0.44

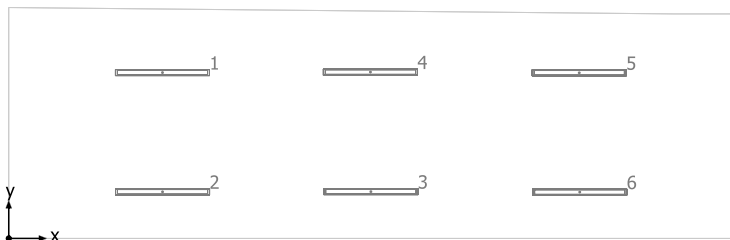
# Luminaire	Φ(Luminaire) [lm]	Power [W]	Luminous efficacy [lm/W]
6 V-TAC - 6200 V-TAC 36W LED Waterproof Lamp 1200mm 4500K	2800	36.0	77.8
Total via all luminaires	16800	216.0	77.8

Lighting power density: 7.40 W/m² = 2.91 W/m²/100 lx (Floor area of room 29.18 m²)

Consumption: 150 - 240 kWh/a of maximum 1050 kWh/a

The energy consumption quantities do not take into account light scenes and their dimming levels.

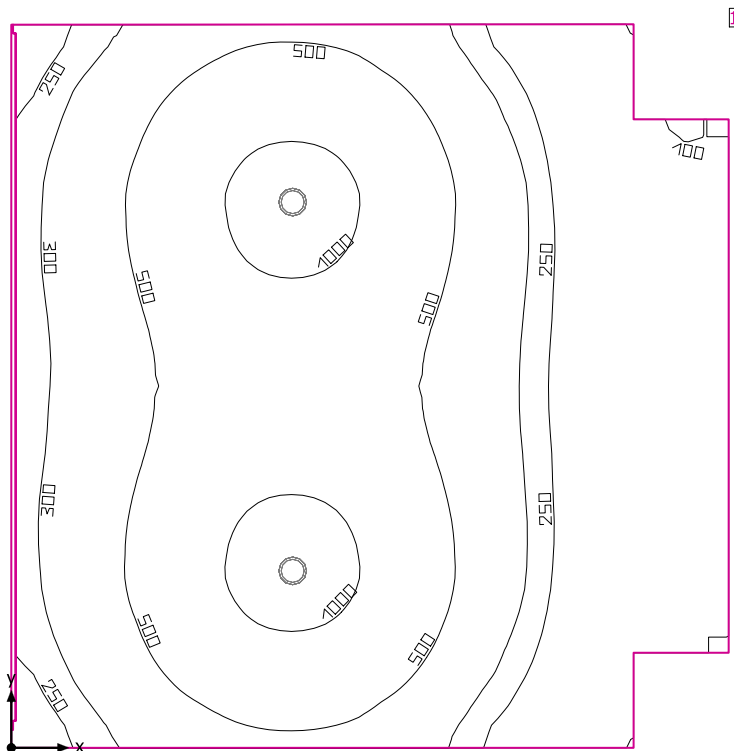
Гардеробна



V-TAC 6200 V-TAC 36W LED Waterproof Lamp 1200mm 4500K

No.	X [m]	Y [m]	Mounting height [m]	Maintenance factor
1	2.044	2.205	2.800	0.80
2	2.045	0.620	2.800	0.80
3	4.815	0.622	2.800	0.80
4	4.808	2.212	2.800	0.80
5	7.584	2.203	2.800	0.80
6	7.591	0.616	2.800	0.80

Изложбена част



Clearance height: 2.800 m, Reflection factors: Ceiling 70.0%, Walls 50.0%, Floor 20.0%, Maintenance factor: 0.80

Workplane

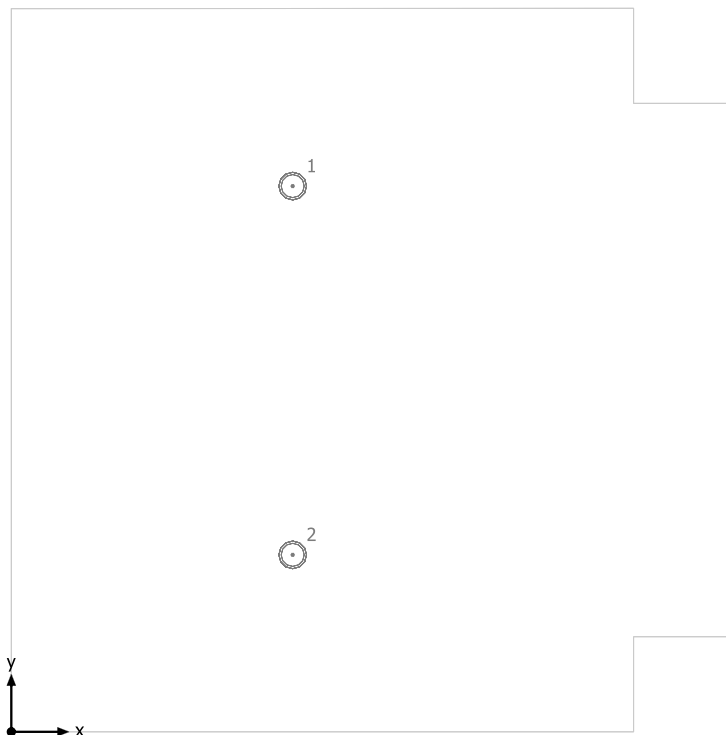
Surface	Result	Average (Target)	Min	Max	Min/average	Min/max
1 Workplane (Изложбена част)	Perpendicular illuminance (adaptive) [lx] Height: 0.800 m, Wall zone: 0.000 m	470 (≥ 300)	84.0	1185	0.18	0.071

# Luminaire	Φ(Luminaire) [lm]	Power [W]	Luminous efficacy [lm/W]
2 V-TAC - 5534 V-TAC 100W LED High Bay A++ 120LM/W 4500K	12000	100.0	120.0
Total via all luminaires	24000	200.0	120.0

Lighting power density: $5.30 \text{ W/m}^2 = 1.13 \text{ W/m}^2/100 \text{ lx}$ (Floor area of room 37.71 m^2)

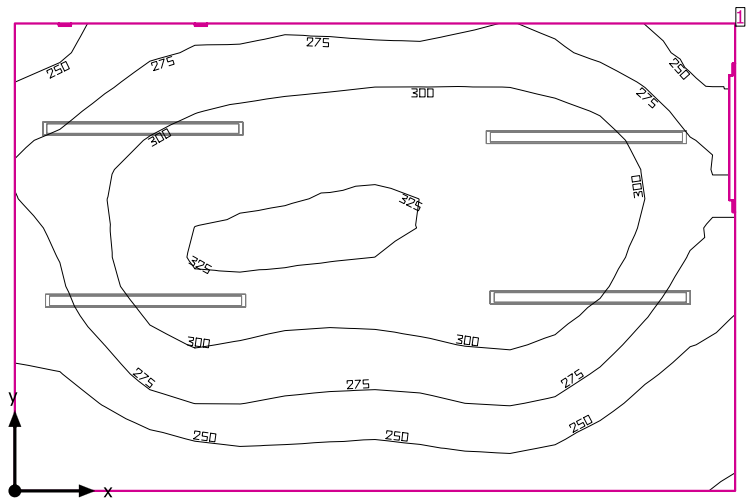
Consumption: 270 kWh/a of maximum 1350 kWh/a

The energy consumption quantities do not take into account light scenes and their dimming levels.

Изложбена част**V-TAC 5534 V-TAC 100W LED High Bay A++ 120LM/W 4500K**

No.	X [m]	Y [m]	Mounting height [m]	Maintenance factor
1	2.442	4.735	2.800	0.80
2	2.442	1.535	2.800	0.80

Каса Портierer



Clearance height: 2.800 m, Reflection factors: Ceiling 70.0%, Walls 50.0%, Floor 20.0%, Maintenance factor: 0.80

Workplane

Surface	Result	Average (Target)	Min	Max	Min/average	Min/max
1 Workplane (Каса Портierer)	Perpendicular illuminance (adaptive) [lx] Height: 0.000 m, Wall zone: 0.000 m	283 (≥ 200)	198	329	0.70	0.60

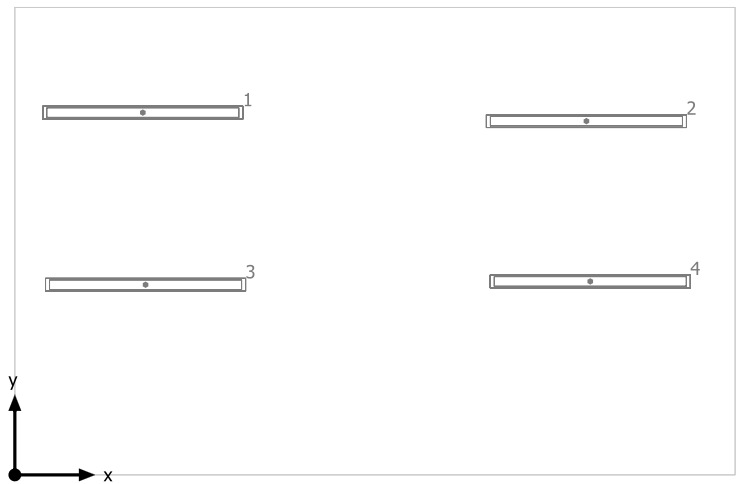
# Luminaire	Φ(Luminaire) [lm]	Power [W]	Luminous efficacy [lm/W]
4 V-TAC - 6200 V-TAC 36W LED Waterproof Lamp 1200mm 4500K	2800	36.0	77.8
Total via all luminaires	11200	144.0	77.8

Lighting power density: 10.96 W/m² = 3.87 W/m²/100 lx (Floor area of room 13.14 m²)

Consumption: 160 kWh/a of maximum 500 kWh/a

The energy consumption quantities do not take into account light scenes and their dimming levels.

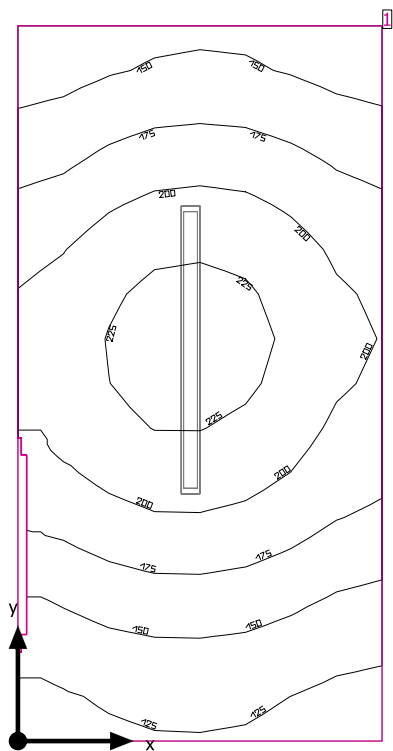
Каса Портнер



V-TAC 6200 V-TAC 36W LED Waterproof Lamp 1200mm 4500K

No.	X [m]	Y [m]	Mounting height [m]	Maintenance factor
1	0.800	2.263	2.800	0.80
2	3.571	2.210	2.800	0.80
3	0.817	1.188	2.800	0.80
4	3.595	1.209	2.800	0.80

Килер



Clearance height: 2.800 m, Reflection factors: Ceiling 70.0%, Walls 50.0%, Floor 20.0%, Maintenance factor: 0.80

Workplane

Surface	Result	Average (Target)	Min	Max	Min/average	Min/max
1 Workplane (Килер)	Perpendicular illuminance (adaptive) [lx] Height: 0.800 m, Wall zone: 0.000 m	180 (≥ 100)	112	236	0.62	0.47

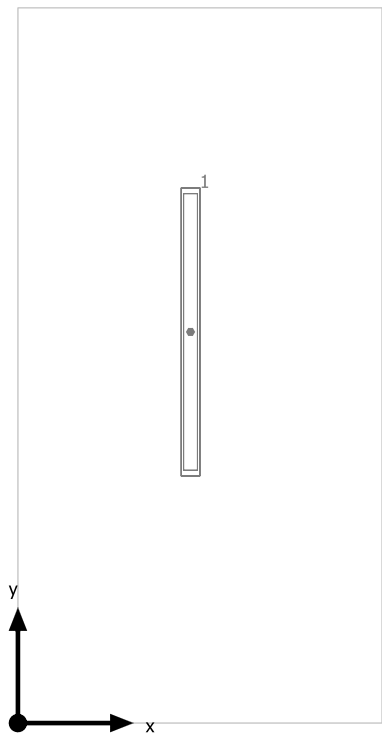
# Luminaire	Φ(Luminaire) [lm]	Power [W]	Luminous efficacy [lm/W]
1 V-TAC - 6200 V-TAC 36W LED Waterproof Lamp 1200mm 4500K	2800	36.0	77.8
Total via all luminaires	2800	36.0	77.8

Lighting power density: 7.34 W/m² = 4.09 W/m²/100 lx (Floor area of room 4.90 m²)

Consumption: 6 kWh/a of maximum 200 kWh/a

The energy consumption quantities do not take into account light scenes and their dimming levels.

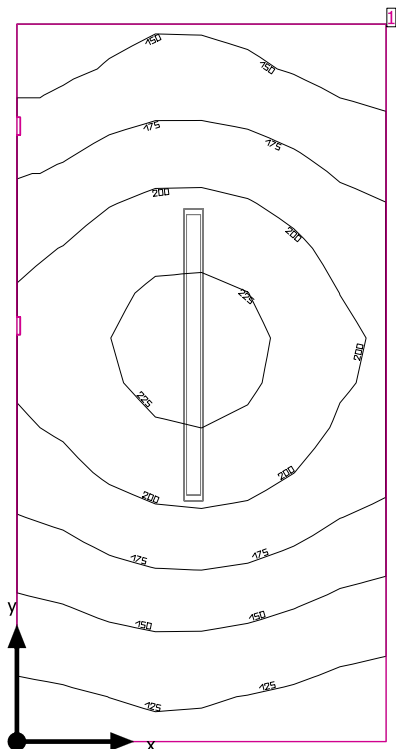
Килер



V-TAC 6200 V-TAC 36W LED Waterproof Lamp 1200mm 4500K

No.	X [m]	Y [m]	Mounting height [m]	Maintenance factor
1	0.749	1.697	2.800	0.80

Килер



Clearance height: 2.800 m, Reflection factors: Ceiling 70.0%, Walls 50.0%, Floor 20.0%, Maintenance factor: 0.80

Workplane

Surface	Result	Average (Target)	Min	Max	Min/average	Min/max
1 Workplane (Килер)	Perpendicular illuminance (adaptive) [lx] Height: 0.800 m, Wall zone: 0.000 m	178 (≥ 100)	109	233	0.61	0.47

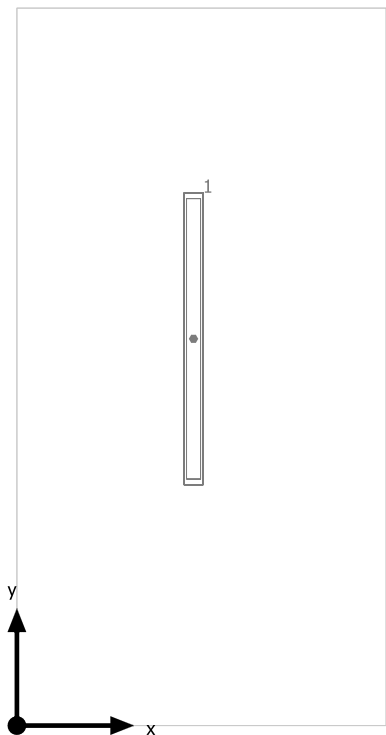
#	Luminaire	Φ(Luminaire) [lm]	Power [W]	Luminous efficacy [lm/W]
1	V-TAC - 6200 V-TAC 36W LED Waterproof Lamp 1200mm 4500K	2800	36.0	77.8
Total via all luminaires		2800	36.0	77.8

Lighting power density: 7.42 W/m² = 4.16 W/m²/100 lx (Floor area of room 4.85 m²)

Consumption: 6 kWh/a of maximum 200 kWh/a

The energy consumption quantities do not take into account light scenes and their dimming levels.

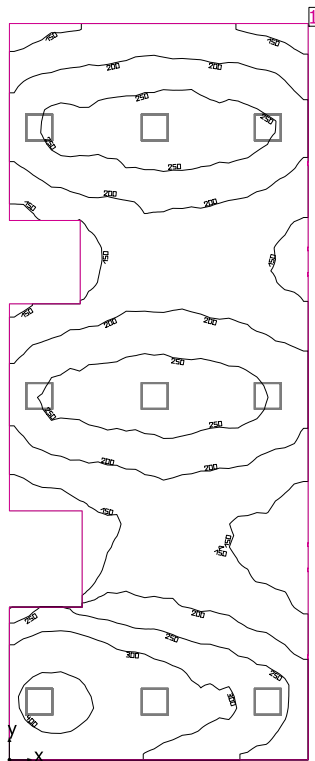
Килер



V-TAC 6200 V-TAC 36W LED Waterproof Lamp 1200mm 4500K

No.	X [m]	Y [m]	Mounting height [m]	Maintenance factor
1	0.756	1.655	2.800	0.80

Колонада



Clearance height: 2.800 m, Reflection factors: Ceiling 70.0%, Walls 50.0%, Floor 50.0%, Maintenance factor: 0.80

Workplane

Surface	Result	Average (Target)	Min	Max	Min/average	Min/max
1 Workplane (Колонада)	Perpendicular illuminance (adaptive) [lx] Height: 0.000 m, Wall zone: 0.000 m	223 (≥ 100)	105	436	0.47	0.24

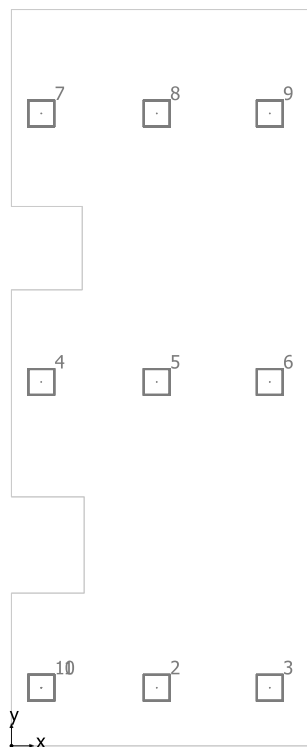
#	Luminaire	Φ(Luminaire) [lm]	Power [W]	Luminous efficacy [lm/W]
10	V-TAC - 6219 V-TAC LED Panel 45W 600 x 600 mm 6000K UGR	3600	45.0	80.0
Total via all luminaires		36000	450.0	80.0

Lighting power density: $4.36 \text{ W/m}^2 = 1.96 \text{ W/m}^2/100 \text{ lx}$ (Floor area of room 103.10 m²)

Consumption: 490 kWh/a of maximum 3650 kWh/a

The energy consumption quantities do not take into account light scenes and their dimming levels.

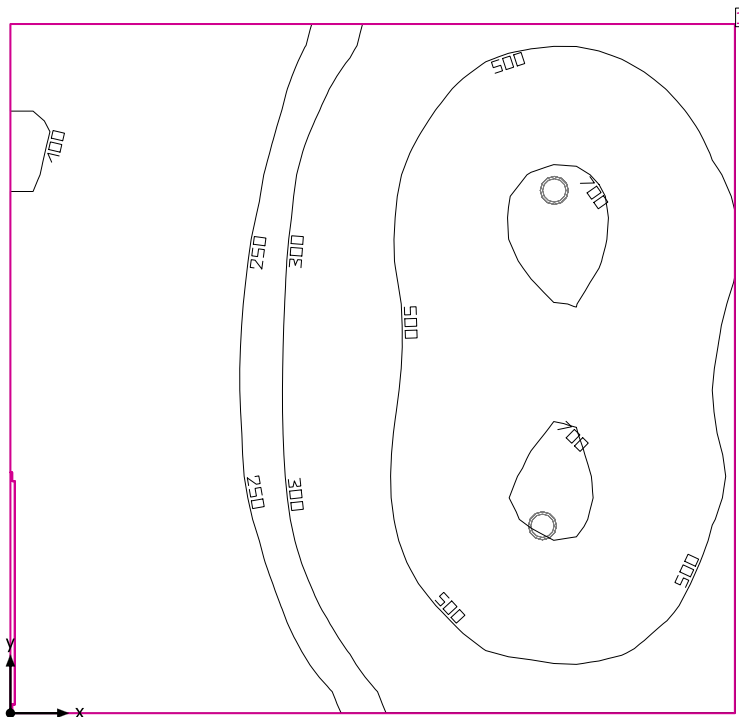
Колонада



V-TAC 6219 V-TAC LED Panel 45W 600 x 600 mm 6000K UGR

No.	X [m]	Y [m]	Mounting height [m]	Maintenance factor
1	0.665	1.296	2.800	0.80
2	3.243	1.296	2.800	0.80
3	5.765	1.296	2.800	0.80
4	0.665	8.120	2.800	0.80
5	3.243	8.120	2.800	0.80
6	5.765	8.120	2.800	0.80
7	0.665	14.111	2.800	0.80
8	3.243	14.111	2.800	0.80
9	5.765	14.111	2.800	0.80
10	0.665	1.296	2.800	0.80

Коридор



Clearance height: 2.800 m, Reflection factors: Ceiling 70.0%, Walls 50.0%, Floor 20.0%, Maintenance factor: 0.80

Workplane

Surface	Result	Average (Target)	Min	Max	Min/average	Min/max
1 Workplane (Коридор)	Perpendicular illuminance (adaptive) [lx] Height: 0.000 m, Wall zone: 0.000 m	387 (≥ 100)	96.1	726	0.25	0.13

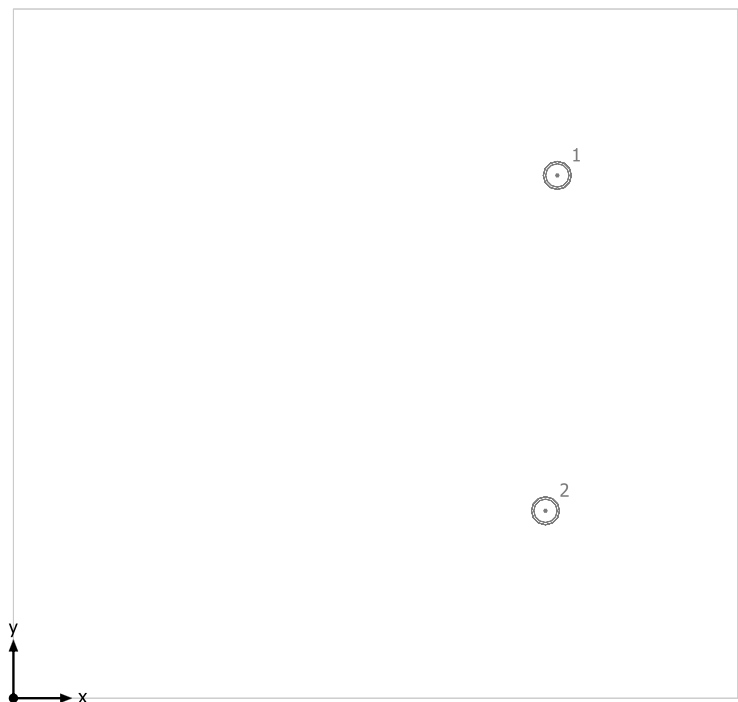
# Luminaire	Φ(Luminaire) [lm]	Power [W]	Luminous efficacy [lm/W]
2 V-TAC - 5534 V-TAC 100W LED High Bay A++ 120LM/W 4500K	12000	100.0	120.0
Total via all luminaires	24000	200.0	120.0

Lighting power density: $5.47 \text{ W/m}^2 = 1.41 \text{ W/m}^2/100 \text{ lx}$ (Floor area of room 36.57 m^2)

Consumption: 220 kWh/a of maximum 1300 kWh/a

The energy consumption quantities do not take into account light scenes and their dimming levels.

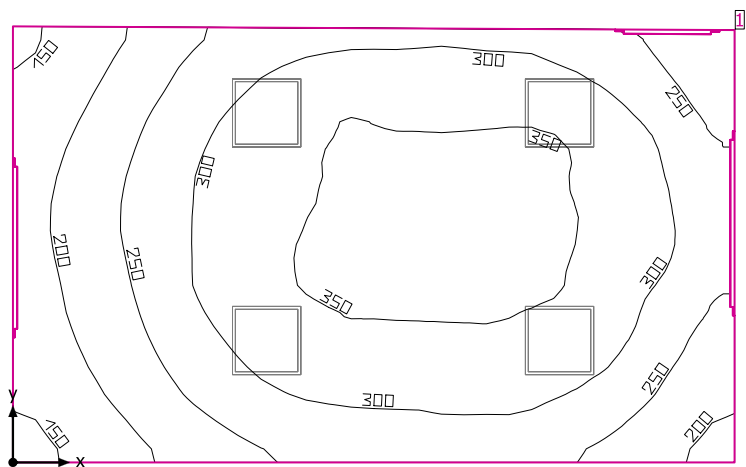
Коридор



V-TAC 5534 V-TAC 100W LED High Bay A++ 120LM/W 4500K

No.	X [m]	Y [m]	Mounting height [m]	Maintenance factor
1	4.655	4.474	2.800	0.80
2	4.554	1.604	2.800	0.80

Коридор



Clearance height: 2.800 m, Reflection factors: Ceiling 70.0%, Walls 50.0%, Floor 20.0%, Maintenance factor: 0.80

Workplane

Surface	Result	Average (Target)	Min	Max	Min/average	Min/max
1 Workplane (Коридор)	Perpendicular illuminance (adaptive) [lx] Height: 0.000 m, Wall zone: 0.000 m	287 (≥ 100)	136	371	0.47	0.37

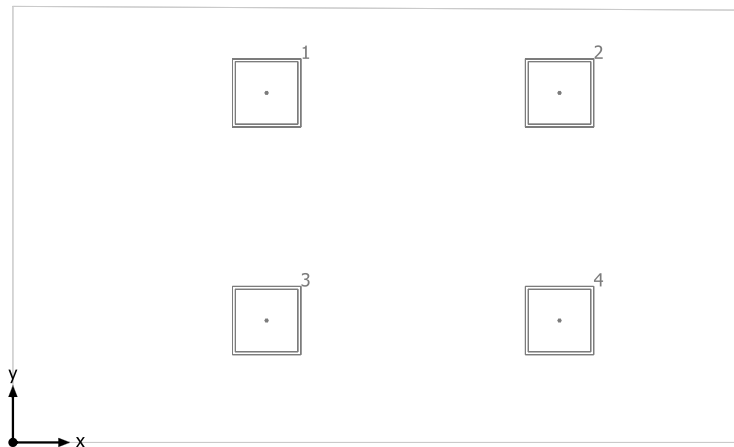
# Luminaire	Φ(Luminaire) [lm]	Power [W]	Luminous efficacy [lm/W]
4 V-TAC - 6219 V-TAC LED Panel 45W 600 x 600 mm 6000K UGR	3600	45.0	80.0
Total via all luminaires	14400	180.0	80.0

Lighting power density: 7.42 W/m² = 2.58 W/m²/100 lx (Floor area of room 24.27 m²)

Consumption: 200 kWh/a of maximum 900 kWh/a

The energy consumption quantities do not take into account light scenes and their dimming levels.

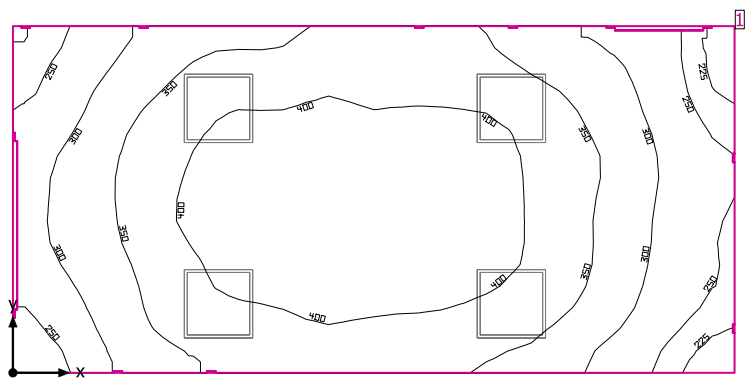
Коридор



V-TAC 6219 V-TAC LED Panel 45W 600 x 600 mm 6000K UGR

No.	X [m]	Y [m]	Mounting height [m]	Maintenance factor
1	2.232	3.076	2.800	0.80
2	4.810	3.076	2.800	0.80
3	2.232	1.073	2.800	0.80
4	4.810	1.073	2.800	0.80

Коридор



Clearance height: 2.800 m, Reflection factors: Ceiling 70.0%, Walls 50.0%, Floor 50.0%, Maintenance factor: 0.80

Workplane

Surface	Result	Average (Target)	Min	Max	Min/average	Min/max
1 Workplane (Коридор)	Perpendicular illuminance (adaptive) [lx] Height: 0.000 m, Wall zone: 0.000 m	351 (≥ 100)	210	436	0.60	0.48

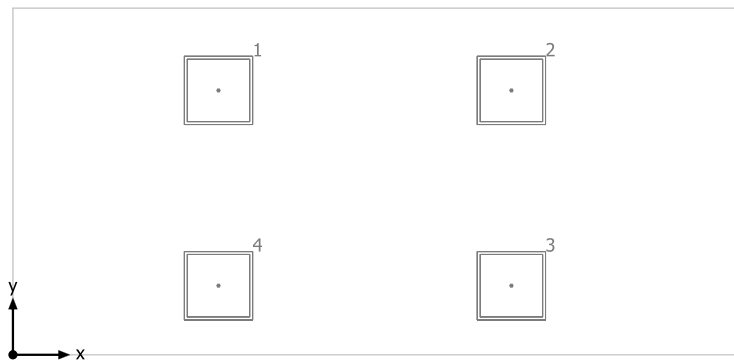
#	Luminaire	Φ(Luminaire) [lm]	Power [W]	Luminous efficacy [lm/W]
4	V-TAC - 6219 V-TAC LED Panel 45W 600 x 600 mm 6000K UGR	3600	45.0	80.0
Total via all luminaires		14400	180.0	80.0

Lighting power density: $9.29 \text{ W/m}^2 = 2.65 \text{ W/m}^2/100 \text{ lx}$ (Floor area of room 19.37 m^2)

Consumption: 200 kWh/a of maximum 700 kWh/a

The energy consumption quantities do not take into account light scenes and their dimming levels.

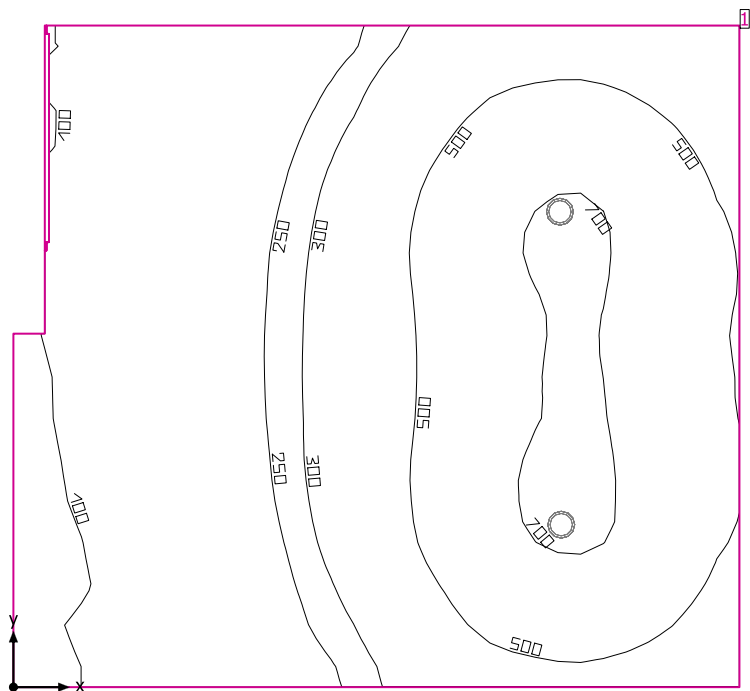
Коридор



V-TAC 6219 V-TAC LED Panel 45W 600 x 600 mm 6000K UGR

No.	X [m]	Y [m]	Mounting height [m]	Maintenance factor
1	1.809	2.326	2.800	0.80
2	4.387	2.326	2.800	0.80
3	4.387	0.608	2.800	0.80
4	1.809	0.608	2.800	0.80

Коридор



Clearance height: 2.800 m, Reflection factors: Ceiling 70.0%, Walls 50.0%, Floor 20.0%, Maintenance factor: 0.80

Workplane

Surface	Result	Average (Target)	Min	Max	Min/average	Min/max
1 Workplane (Коридор)	Perpendicular illuminance (adaptive) [lx] Height: 0.000 m, Wall zone: 0.000 m	379 (≥ 100)	87.2	729	0.23	0.12

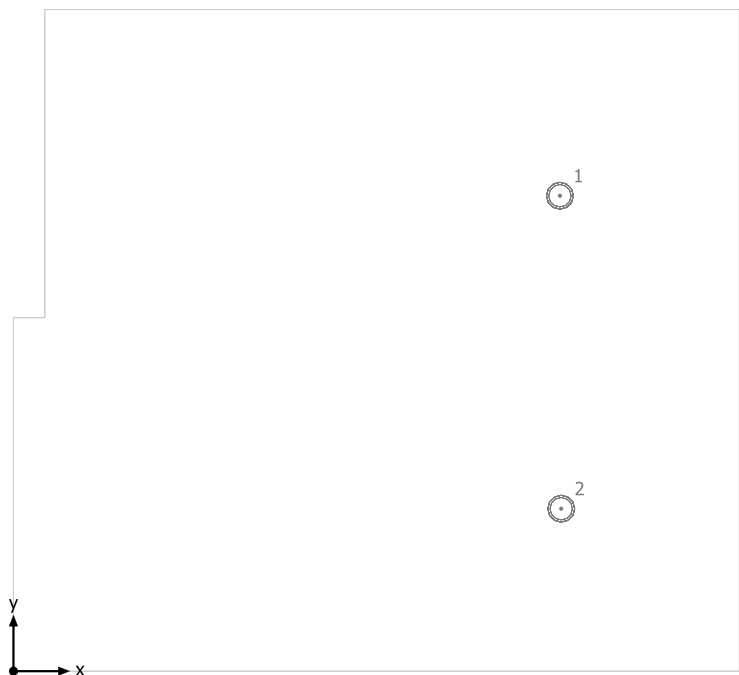
# Luminaire	Φ(Luminaire) [lm]	Power [W]	Luminous efficacy [lm/W]
2 V-TAC - 5534 V-TAC 100W LED High Bay A++ 120LM/W 4500K	12000	100.0	120.0
Total via all luminaires	24000	200.0	120.0

Lighting power density: 5.33 W/m² = 1.41 W/m²/100 lx (Floor area of room 37.49 m²)

Consumption: 220 kWh/a of maximum 1350 kWh/a

The energy consumption quantities do not take into account light scenes and their dimming levels.

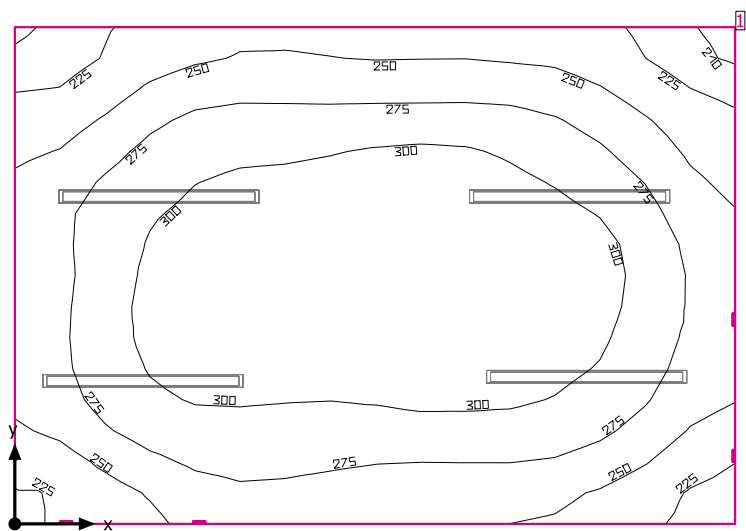
Коридор



V-TAC 5534 V-TAC 100W LED High Bay A++ 120LM/W 4500K

No.	X [m]	Y [m]	Mounting height [m]	Maintenance factor
1	4.878	4.243	2.800	0.80
2	4.890	1.450	2.800	0.80

Персонал



Clearance height: 2.800 m, Reflection factors: Ceiling 70.0%, Walls 50.0%, Floor 20.0%, Maintenance factor: 0.80

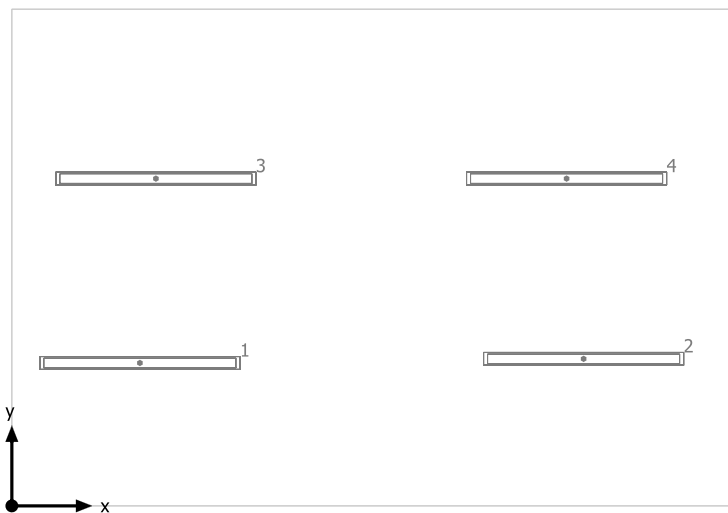
Workplane

Surface	Result	Average (Target)	Min	Max	Min/average	Min/max
1 Workplane (Персонал)	Perpendicular illuminance (adaptive) [lx] Height: 0.000 m, Wall zone: 0.000 m	279 (≥ 200)	207	324	0.74	0.64

# Luminaire	Φ(Luminaire) [lm]	Power [W]	Luminous efficacy [lm/W]
4 V-TAC - 6200 V-TAC 36W LED Waterproof Lamp 1200mm 4500K	2800	36.0	77.8
Total via all luminaires	11200	144.0	77.8

Lighting power density: $10.31 \text{ W/m}^2 = 3.69 \text{ W/m}^2/100 \text{ lx}$ (Floor area of room 13.97 m^2)
Consumption: 160 kWh/a of maximum 500 kWh/a
The energy consumption quantities do not take into account light scenes and their dimming levels.

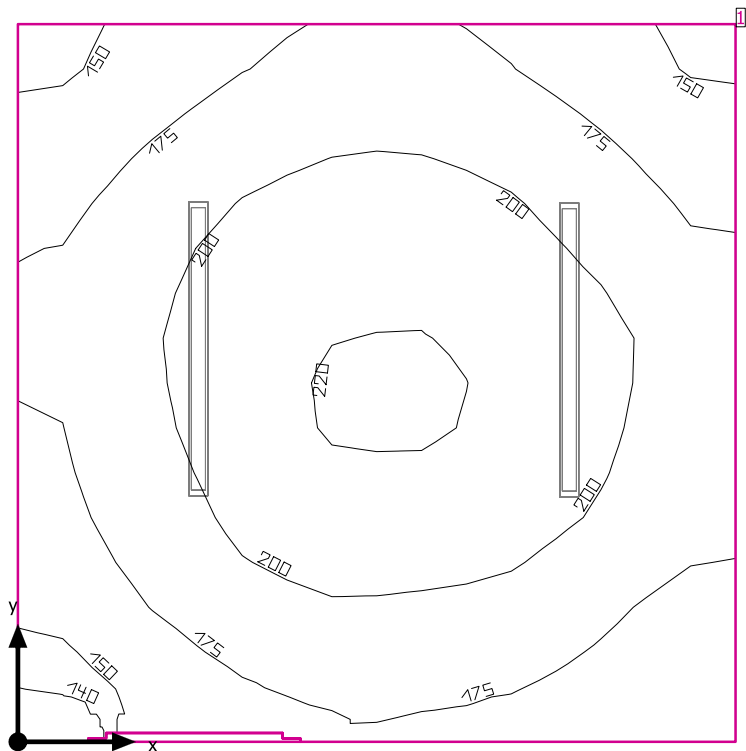
Персонал



V-TAC 6200 V-TAC 36W LED Waterproof Lamp 1200mm 4500K

No.	X [m]	Y [m]	Mounting height [m]	Maintenance factor
1	0.800	0.893	2.800	0.80
2	3.572	0.919	2.800	0.80
3	0.900	2.045	2.800	0.80
4	3.466	2.045	2.800	0.80

Персонал



Clearance height: 2.800 m, Reflection factors: Ceiling 70.0%, Walls 50.0%, Floor 20.0%, Maintenance factor: 0.80

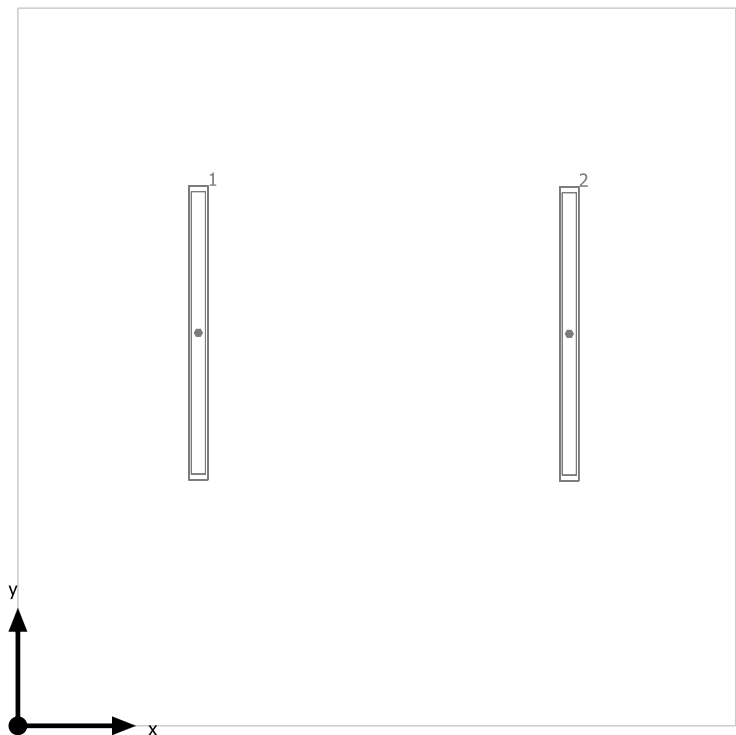
Workplane

Surface	Result	Average (Target)	Min	Max	Min/average	Min/max
1 Workplane (Персонал)	Perpendicular illuminance (adaptive) [lx] Height: 0.000 m, Wall zone: 0.000 m	208 (≥ 200)	136	222	0.72	0.61

# Luminaire	Φ(Luminaire) [lm]	Power [W]	Luminous efficacy [lm/W]
2 V-TAC - 6200 V-TAC 36W LED Waterproof Lamp 1200mm 4500K	2800	36.0	77.8
Total via all luminaires	5600	72.0	77.8

Lighting power density: $7.74 \text{ W/m}^2 = 4.12 \text{ W/m}^2/100 \text{ lx}$ (Floor area of room 9.30 m^2)
Consumption: 50 - 79 kWh/a of maximum 350 kWh/a
The energy consumption quantities do not take into account light scenes and their dimming levels.

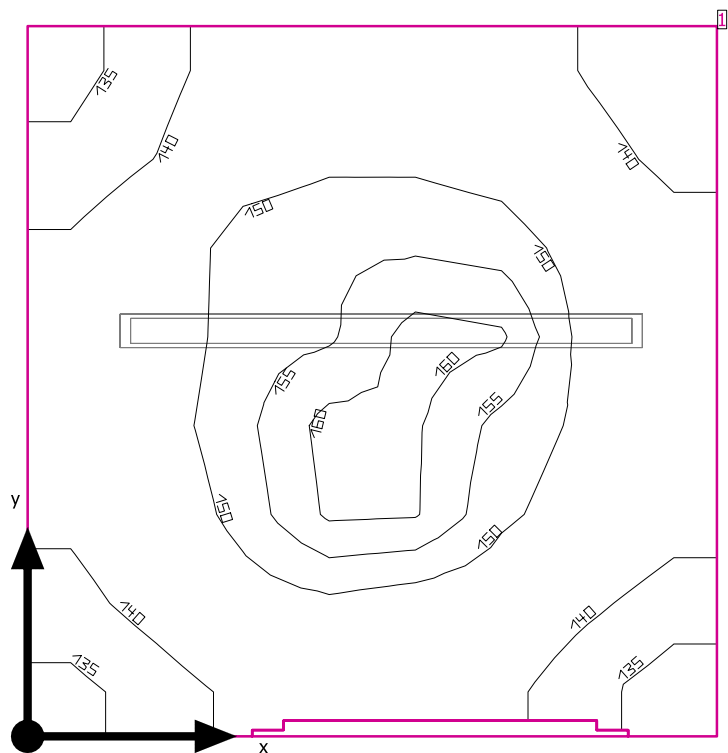
Персонал



V-TAC 6200 V-TAC 36W LED Waterproof Lamp 1200mm 4500K

No.	X [m]	Y [m]	Mounting height [m]	Maintenance factor
1	0.767	1.670	2.800	0.80
2	2.344	1.666	2.800	0.80

Персонал



Clearance height: 2.800 m, Reflection factors: Ceiling 70.0%, Walls 50.0%, Floor 20.0%, Maintenance factor: 0.80

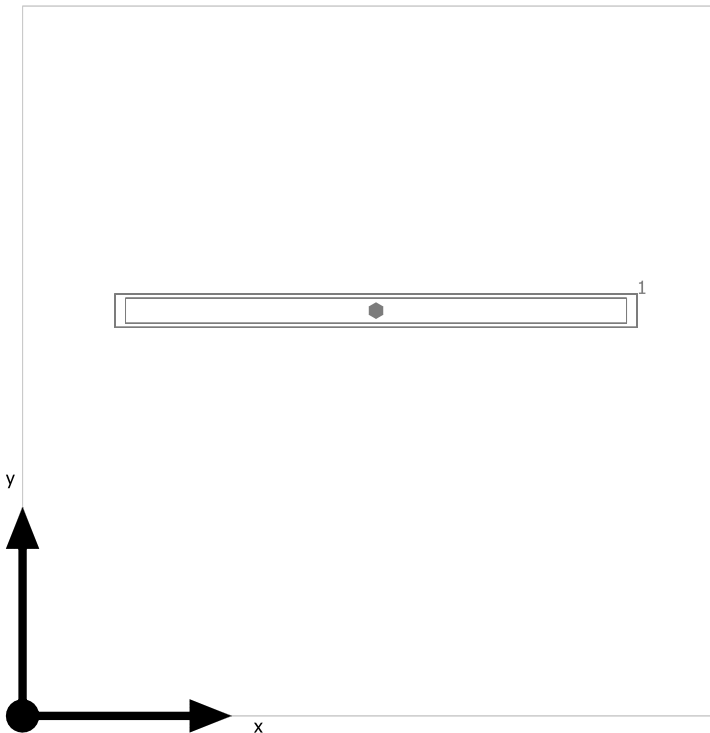
Workplane

Surface	Result	Average (Target)	Min	Max	Min/average	Min/max
1 Workplane (Персонал)	Perpendicular illuminance (adaptive) [lx] Height: 0.000 m, Wall zone: 0.000 m	196 (≥ 200)	133	161	0.91	0.83

#	Luminaire	Φ(Luminaire) [lm]	Power [W]	Luminous efficacy [lm/W]
1	V-TAC - 6200 V-TAC 36W LED Waterproof Lamp 1200mm 4500K	2800	36.0	77.8
Total via all luminaires		2800	36.0	77.8

Lighting power density: 12.83 W/m² = 8.78 W/m²/100 lx (Floor area of room 2.81 m²)
Consumption: 40 kWh/a of maximum 100 kWh/a
The energy consumption quantities do not take into account light scenes and their dimming levels.

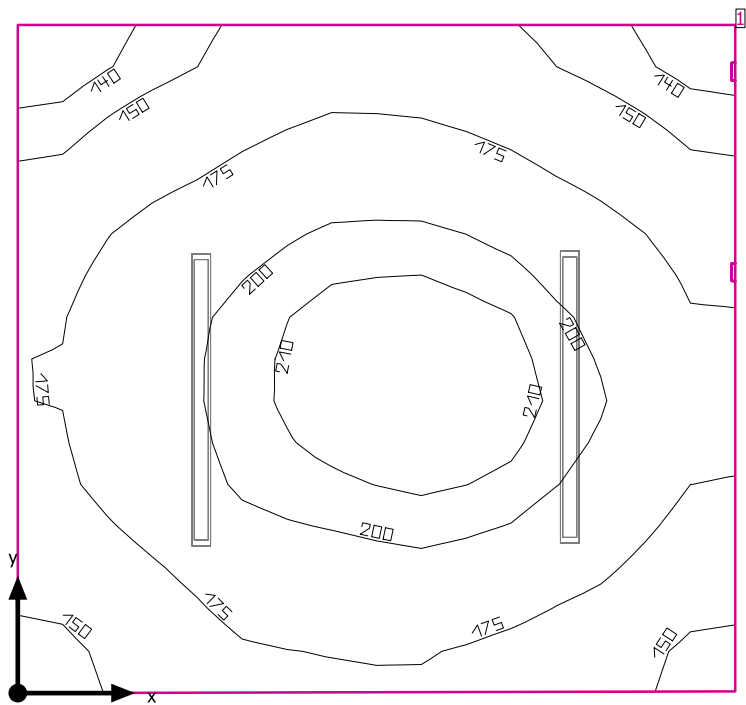
Персонал



V-TAC 6200 V-TAC 36W LED Waterproof Lamp 1200mm 4500K

No.	X [m]	Y [m]	Mounting height [m]	Maintenance factor
1	0.847	0.971	2.800	0.80

Персонал



Clearance height: 2.800 m, Reflection factors: Ceiling 70.0%, Walls 50.0%, Floor 20.0%, Maintenance factor: 0.80

Workplane

Surface	Result	Average (Target)	Min	Max	Min/average	Min/max
1 Workplane (Персонал)	Perpendicular illuminance (adaptive) [lx] Height: 0.000 m, Wall zone: 0.000 m	201 (≥ 200)	131	218	0.73	0.60

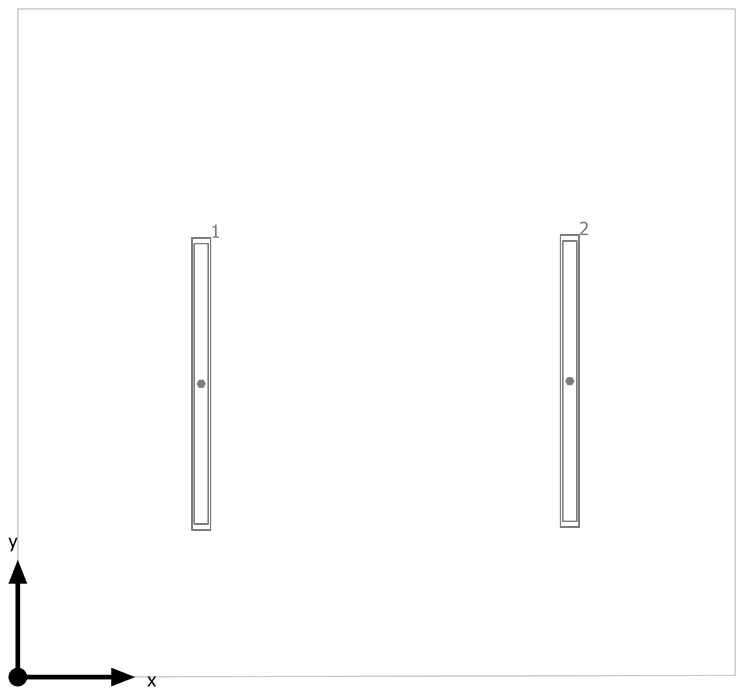
# Luminaire	Φ(Luminaire) [lm]	Power [W]	Luminous efficacy [lm/W]
2 V-TAC - 6200 V-TAC 36W LED Waterproof Lamp 1200mm 4500K	2800	36.0	77.8
Total via all luminaires	5600	72.0	77.8

Lighting power density: 8.21 W/m² = 4.56 W/m²/100 lx (Floor area of room 8.77 m²)

Consumption: 50 - 79 kWh/a of maximum 350 kWh/a

The energy consumption quantities do not take into account light scenes and their dimming levels.

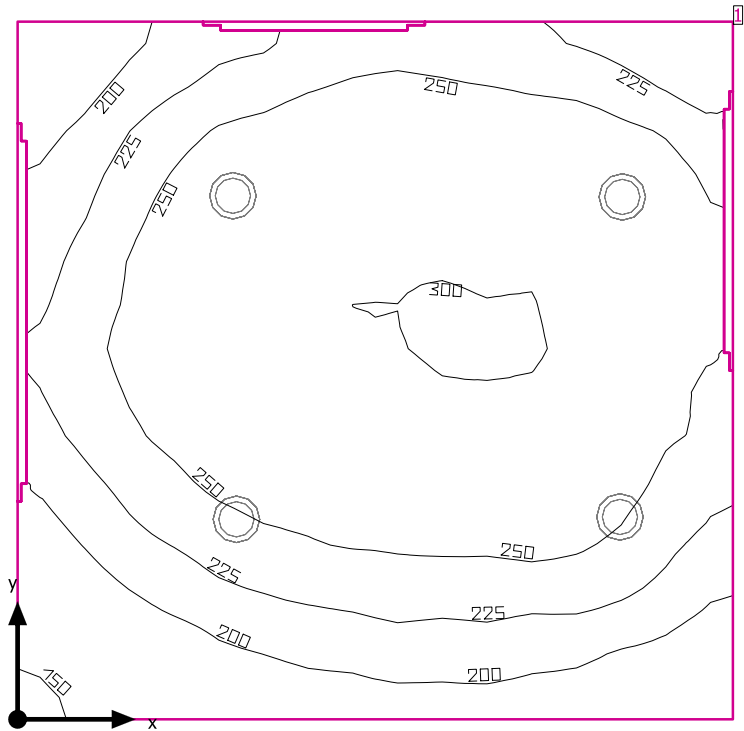
Персонал



V-TAC 6200 V-TAC 36W LED Waterproof Lamp 1200mm 4500K

No.	X [m]	Y [m]	Mounting height [m]	Maintenance factor
1	0.785	1.255	2.800	0.80
2	2.363	1.267	2.800	0.80

Предверие тоалетна инвалиди



Clearance height: 2.800 m, Reflection factors: Ceiling 70.0%, Walls 50.0%, Floor 50.0%, Maintenance factor: 0.80

Workplane

Surface	Result	Average (Target)	Min	Max	Min/average	Min/max
1 Workplane (Предверие тоалетна инвалиди)	Perpendicular illuminance (adaptive) [lx] Height: 0.800 m, Wall zone: 0.000 m	245 (≥ 200)	143	304	0.58	0.47

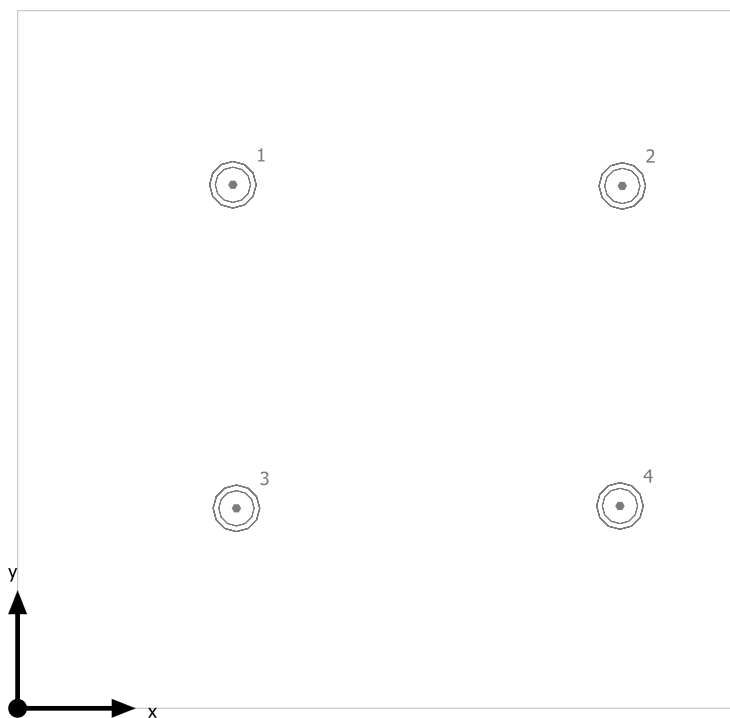
# Luminaire	Φ(Luminaire) [lm]	Power [W]	Luminous efficacy [lm/W]
4 V-TAC - 4759 V-TAC 18W LED Panel Downlight Glass Round 6000K	1260	18.0	70.0
Total via all luminaires	5040	72.0	70.0

Lighting power density: $7.99 \text{ W/m}^2 = 3.27 \text{ W/m}^2/100 \text{ lx}$ (Floor area of room 9.01 m^2)

Consumption: 37 - 59 kWh/a of maximum 350 kWh/a

The energy consumption quantities do not take into account light scenes and their dimming levels.

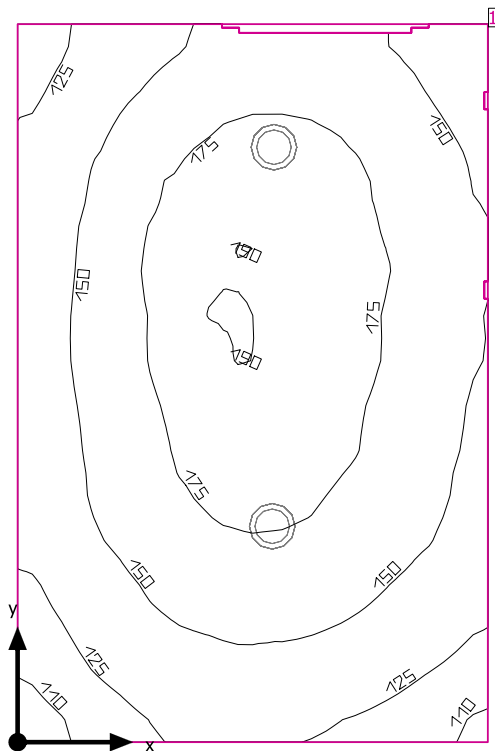
Предверие тоалетна инвалиди



V-TAC 4759 V-TAC 18W LED Panel Downlight Glass Round 6000K

No.	X [m]	Y [m]	Mounting height [m]	Maintenance factor
1	0.915	2.225	2.800	0.80
2	2.570	2.220	2.800	0.80
3	0.930	0.850	2.800	0.80
4	2.560	0.860	2.800	0.80

Предверие тоалетна мъже



Clearance height: 2.800 m, Reflection factors: Ceiling 70.0%, Walls 50.0%, Floor 50.0%, Maintenance factor: 0.80

Workplane

Surface	Result	Average (Target)	Min	Max	Min/average	Min/max
1 Workplane (Предверие тоалетна мъже)	Perpendicular illuminance (adaptive) [lx] Height: 0.800 m, Wall zone: 0.000 m	157 (≥ 150)	102	190	0.65	0.54

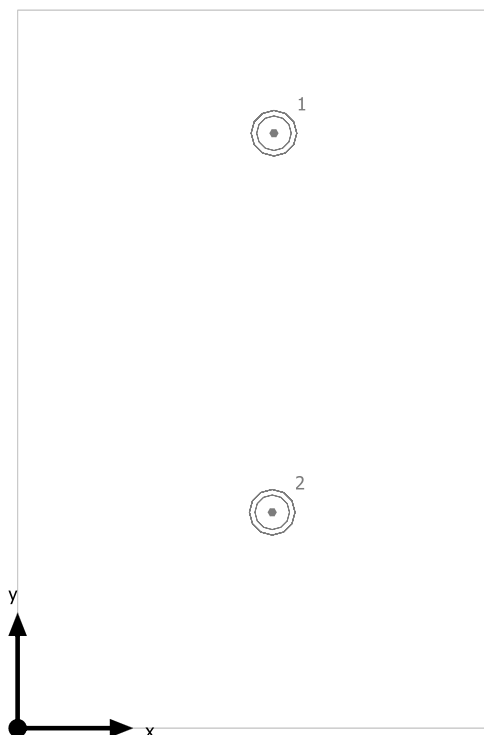
# Luminaire	Φ(Luminaire) [lm]	Power [W]	Luminous efficacy [lm/W]
2 V-TAC - 4759 V-TAC 18W LED Panel Downlight Glass Round 6000K	1260	18.0	70.0
Total via all luminaires	2520	36.0	70.0

Lighting power density: $5.67 \text{ W/m}^2 = 3.61 \text{ W/m}^2/100 \text{ lx}$ (Floor area of room 6.35 m^2)

Consumption: 30 kWh/a of maximum 250 kWh/a

The energy consumption quantities do not take into account light scenes and their dimming levels.

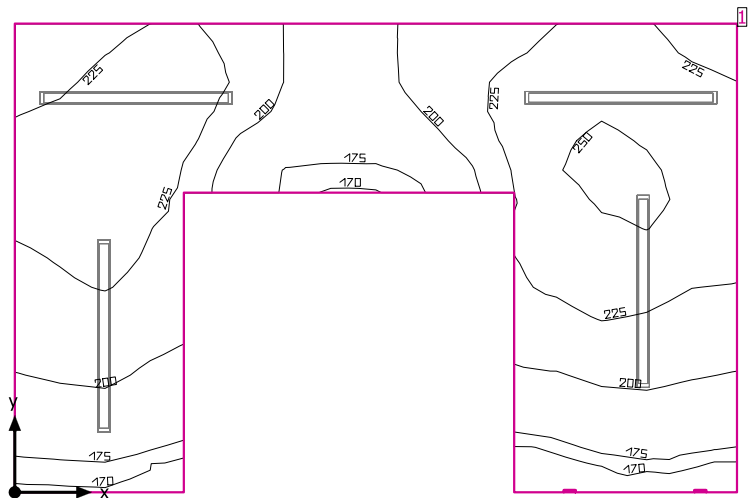
Предверие тоалетна мъже



V-TAC 4759 V-TAC 18W LED Panel Downlight Glass Round 6000K

No.	X [m]	Y [m]	Mounting height [m]	Maintenance factor
1	1.112	2.581	2.800	0.80
2	1.105	0.937	2.800	0.80

Стълбище



Clearance height: 2.800 m, Reflection factors: Ceiling 70.0%, Walls 50.0%, Floor 20.0%, Maintenance factor: 0.80

Workplane

Surface	Result	Average (Target)	Min	Max	Min/average	Min/max
1 Workplane (Стълбище)	Perpendicular illuminance (adaptive) [lx] Height: 0.000 m, Wall zone: 0.000 m	214 (≥ 150)	164	255	0.77	0.64

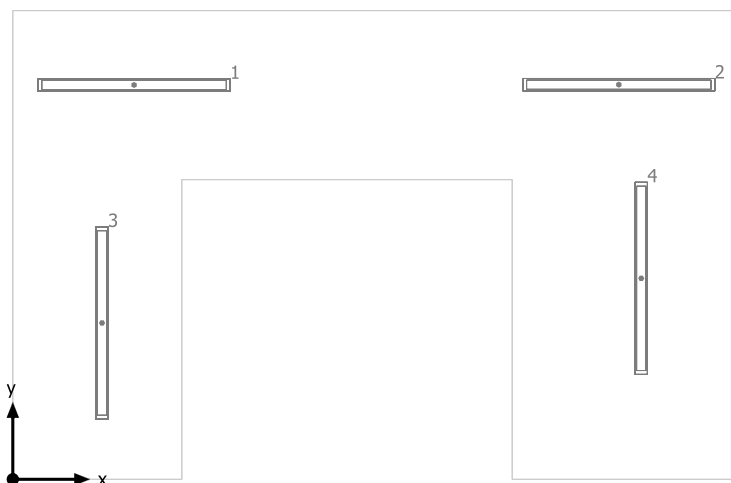
# Luminaire	Φ(Luminaire) [lm]	Power [W]	Luminous efficacy [lm/W]
4 V-TAC - 6200 V-TAC 36W LED Waterproof Lamp 1200mm 4500K	2800	36.0	77.8
Total via all luminaires	11200	144.0	77.8

Lighting power density: 14.20 W/m² = 6.64 W/m²/100 lx (Floor area of room 10.14 m²)

Consumption: 100 - 160 kWh/a of maximum 400 kWh/a

The energy consumption quantities do not take into account light scenes and their dimming levels.

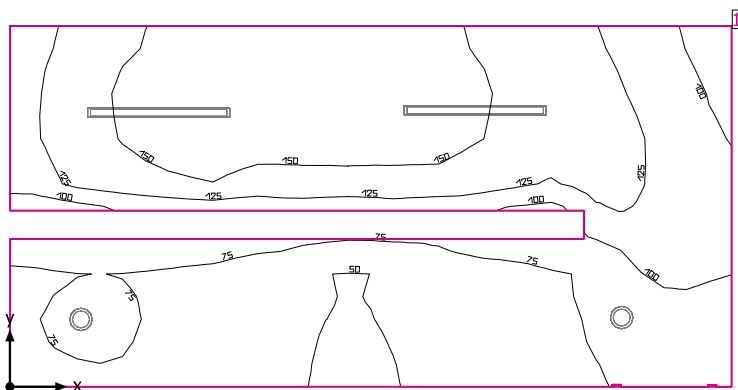
Стълбище



V-TAC 6200 V-TAC 36W LED Waterproof Lamp 1200mm 4500K

No.	X [m]	Y [m]	Mounting height [m]	Maintenance factor
1	0.789	2.566	2.800	0.80
2	3.944	2.568	2.800	0.80
3	0.581	1.017	2.800	0.80
4	4.090	1.308	2.800	0.80

Стълбище



Clearance height: 2.800 m, Reflection factors: Ceiling 70.0%, Walls 50.0%, Floor 20.0%, Maintenance factor: 0.80

Workplane

Surface	Result	Average (Target)	Min	Max	Min/average	Min/max
1 Workplane (Стълбище)	Perpendicular illuminance (adaptive) [lx] Height: 0.000 m, Wall zone: 0.000 m	108 (≥ 100)	47.8	161	0.44	0.30

# Luminaire	Φ(Luminaire) [lm]	Power [W]	Luminous efficacy [lm/W]
2 V-TAC - 4759 V-TAC 18W LED Panel Downlight Glass Round 6000K	1260	18.0	70.0
2 V-TAC - 6200 V-TAC 36W LED Waterproof Lamp 1200mm 4500K	2800	36.0	77.8
Total via all luminaires	8120	108.0	75.2

Lighting power density: $5.71 \text{ W/m}^2 = 5.31 \text{ W/m}^2/100 \text{ lx}$ (Floor area of room 18.90 m^2)

Consumption: 97 - 120 kWh/a of maximum 700 kWh/a

The energy consumption quantities do not take into account light scenes and their dimming levels.

Стълбище



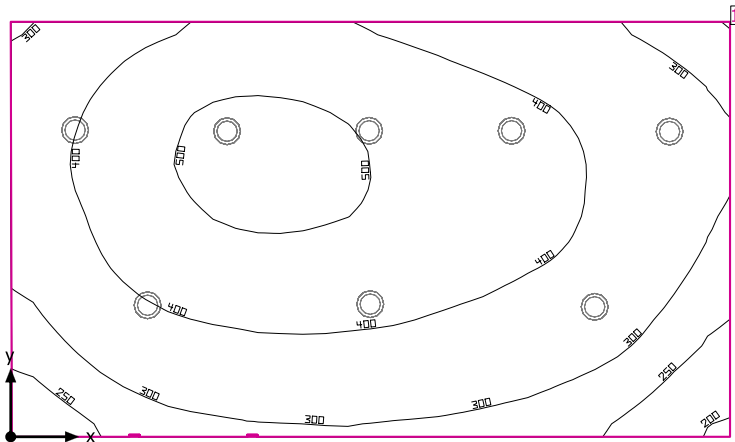
V-TAC 6200 V-TAC 36W LED Waterproof Lamp 1200mm 4500K

No.	X [m]	Y [m]	Mounting height [m]	Maintenance factor
1	1.309	2.411	2.800	0.80
2	4.094	2.433	2.800	0.80

V-TAC 4759 V-TAC 18W LED Panel Downlight Glass Round 6000K

No.	X [m]	Y [m]	Mounting height [m]	Maintenance factor
3	0.625	0.593	2.800	0.80
4	5.383	0.609	2.800	0.80

Тоалетна жени



Clearance height: 2.800 m, Reflection factors: Ceiling 70.0%, Walls 50.0%, Floor 50.0%, Maintenance factor: 0.80

Workplane

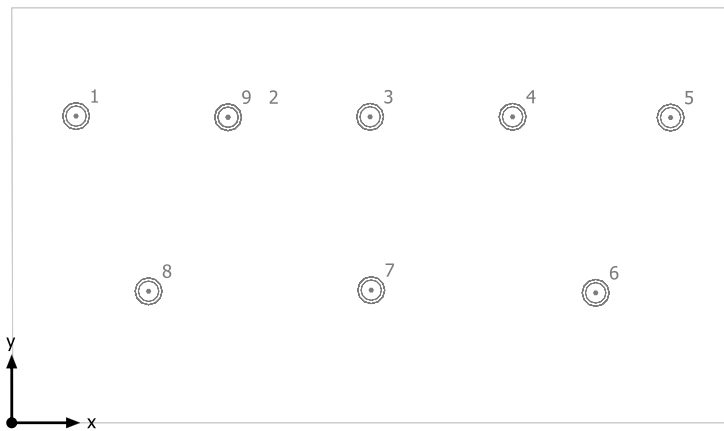
Surface	Result	Average (Target)	Min	Max	Min/average	Min/max
1 Workplane (Тоалетна жени)	Perpendicular illuminance (adaptive) [lx] Height: 0.800 m, Wall zone: 0.000 m	383 (≥ 200)	195	529	0.51	0.37

# Luminaire	Φ(Luminaire) [lm]	Power [W]	Luminous efficacy [lm/W]
9 V-TAC - 4759 V-TAC 18W LED Panel Downlight Glass Round 6000K	1260	18.0	70.0
Total via all luminaires	11340	162.0	70.0

Lighting power density: $10.05 \text{ W/m}^2 = 2.63 \text{ W/m}^2/100 \text{ lx}$ (Floor area of room 16.12 m^2)

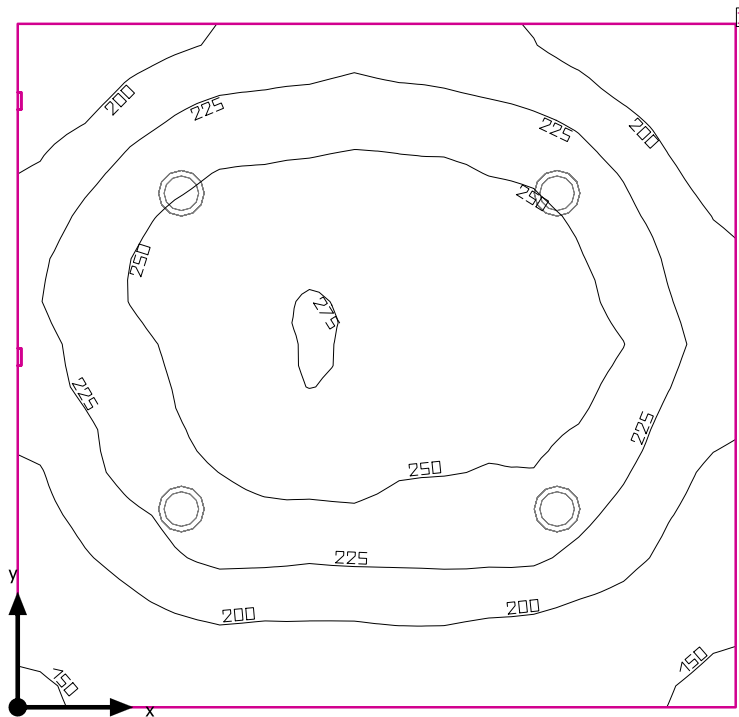
Consumption: 130 kWh/a of maximum 600 kWh/a

The energy consumption quantities do not take into account light scenes and their dimming levels.

Тоалетна жени**V-TAC 4759 V-TAC 18W LED Panel Downlight Glass Round 6000K**

No.	X [m]	Y [m]	Mounting height [m]	Maintenance factor
1	0.473	2.254	2.800	0.80
2	1.590	2.246	2.800	0.80
3	2.635	2.249	2.800	0.80
4	3.682	2.249	2.800	0.80
5	4.844	2.243	2.800	0.80
6	4.293	0.955	2.800	0.80
7	2.643	0.975	2.800	0.80
8	1.006	0.967	2.800	0.80
9	1.590	2.246	2.800	0.80

Тоалетна инвалиди



Clearance height: 2.800 m, Reflection factors: Ceiling 70.0%, Walls 50.0%, Floor 20.0%, Maintenance factor: 0.80

Workplane

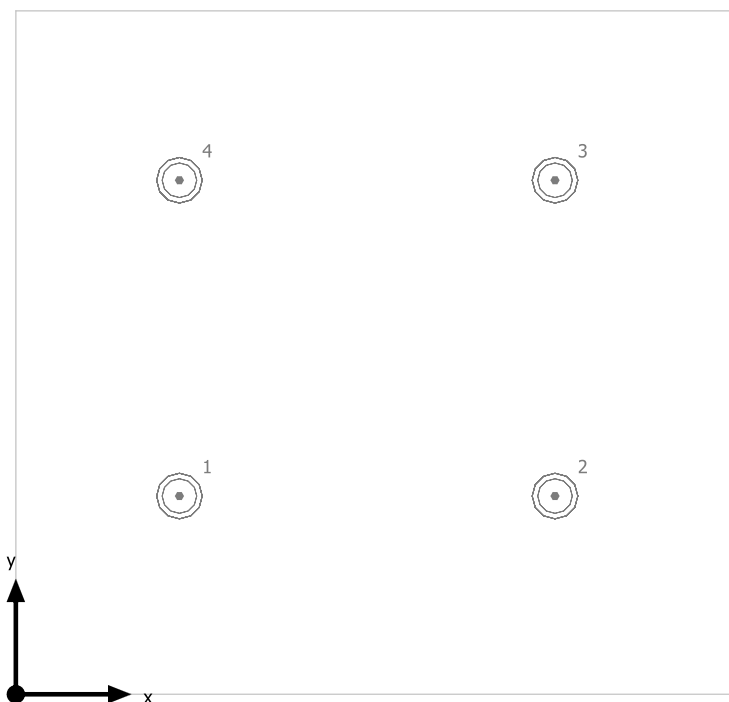
Surface	Result	Average (Target)	Min	Max	Min/average	Min/max
1 Workplane (Тоалетна инвалиди)	Perpendicular illuminance (adaptive) [lx] Height: 0.800 m, Wall zone: 0.000 m	224 (≥ 200)	140	275	0.63	0.51

# Luminaire	Φ(Luminaire) [lm]	Power [W]	Luminous efficacy [lm/W]
4 V-TAC - 4759 V-TAC 18W LED Panel Downlight Glass Round 6000K	1260	18.0	70.0
Total via all luminaires	5040	72.0	70.0

Lighting power density: $7.80 \text{ W/m}^2 = 3.48 \text{ W/m}^2/100 \text{ lx}$ (Floor area of room 9.24 m^2)

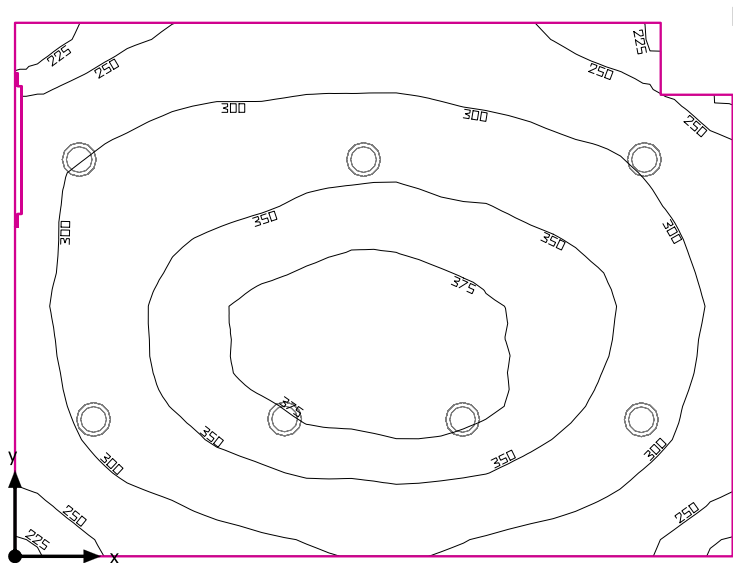
Consumption: 37 - 59 kWh/a of maximum 350 kWh/a

The energy consumption quantities do not take into account light scenes and their dimming levels.

Тоалетна инвалиди**V-TAC 4759 V-TAC 18W LED Panel Downlight Glass Round 6000K**

No.	X [m]	Y [m]	Mounting height [m]	Maintenance factor
1	0.710	0.860	2.800	0.80
2	2.340	0.860	2.800	0.80
3	2.340	2.230	2.800	0.80
4	0.710	2.230	2.800	0.80

Тоалетна мъже



Clearance height: 2.800 m, Reflection factors: Ceiling 70.0%, Walls 50.0%, Floor 20.0%, Maintenance factor: 0.80

Workplane

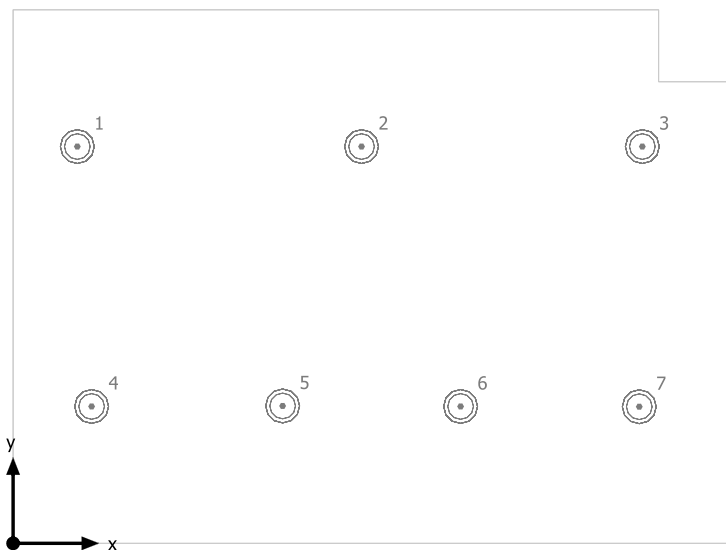
Surface	Result	Average (Target)	Min	Max	Min/average	Min/max
1 Workplane (Тоалетна мъже)	Perpendicular illuminance (adaptive) [lx] Height: 0.800 m, Wall zone: 0.000 m	320 (≥ 200)	208	392	0.65	0.53

# Luminaire	Φ(Luminaire) [lm]	Power [W]	Luminous efficacy [lm/W]
7 V-TAC - 4759 V-TAC 18W LED Panel Downlight Glass Round 6000K	1260	18.0	70.0
Total via all luminaires	8820	126.0	70.0

Lighting power density: 9.79 W/m² = 3.06 W/m²/100 lx (Floor area of room 12.88 m²)

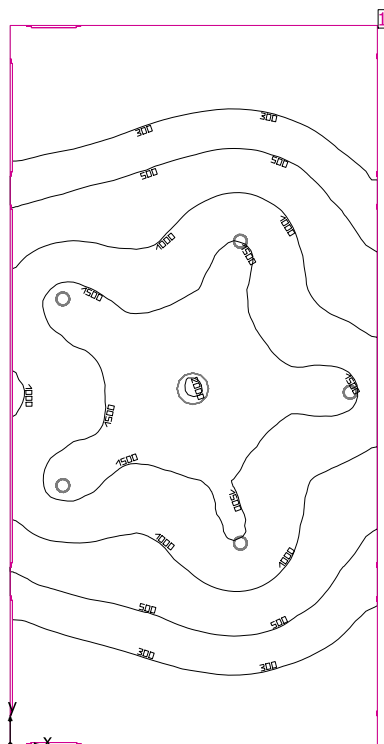
Consumption: 100 kWh/a of maximum 500 kWh/a

The energy consumption quantities do not take into account light scenes and their dimming levels.

Тоалетна мъже**V-TAC 4759 V-TAC 18W LED Panel Downlight Glass Round 6000K**

No.	X [m]	Y [m]	Mounting height [m]	Maintenance factor
1	0.375	2.317	2.800	0.80
2	2.035	2.317	2.800	0.80
3	3.675	2.317	2.800	0.80
4	0.459	0.799	2.800	0.80
5	1.574	0.802	2.800	0.80
6	2.614	0.799	2.800	0.80
7	3.657	0.798	2.800	0.80

Фойе



Clearance height: 2.800 m, Reflection factors: Ceiling 70.0%, Walls 50.0%, Floor 20.0%, Maintenance factor: 0.80

Workplane

Surface	Result	Average (Target)	Min	Max	Min/average	Min/max
1 Workplane (Фойе)	Perpendicular illuminance (adaptive) [lx] Height: 0.800 m, Wall zone: 0.000 m	817 (≥ 500)	126	2012	0.15	0.063

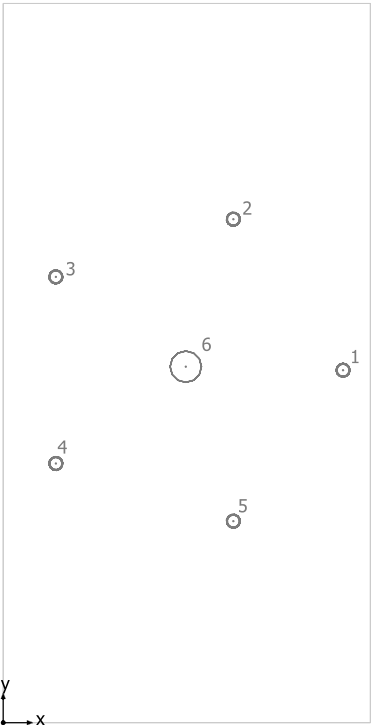
# Luminaire	Φ(Luminaire) [lm]	Power [W]	Luminous efficacy [lm/W]
5 V-TAC - 5534 V-TAC 100W LED High Bay A++ 120LM/W 4500K	12000	100.0	120.0
1 V-TAC - 5537 V-TAC 150W LED High Bay A++ 120LM/W 4500K	18600	150.0	124.0
Total via all luminaires	78600	650.0	120.9

Lighting power density: $8.63 \text{ W/m}^2 = 1.06 \text{ W/m}^2/100 \text{ lx}$ (Floor area of room 75.30 m^2)

Consumption: 860 kWh/a of maximum 2650 kWh/a

The energy consumption quantities do not take into account light scenes and their dimming levels.

Фойе



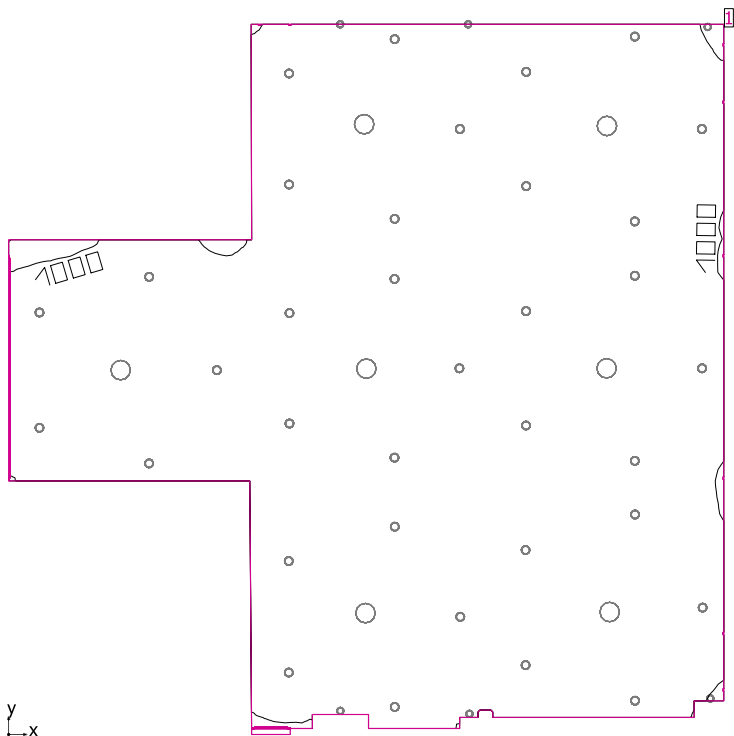
V-TAC 5534 V-TAC 100W LED High Bay A++ 120LM/W 4500K

No.	X [m]	Y [m]	Mounting height [m]	Maintenance factor
1	5.739	5.952	2.800	0.80
2	3.886	8.502	2.800	0.80
3	0.889	7.528	2.800	0.80
4	0.889	4.376	2.800	0.80
5	3.886	3.403	2.800	0.80

V-TAC 5537 V-TAC 150W LED High Bay A++ 120LM/W 4500K

No.	X [m]	Y [m]	Mounting height [m]	Maintenance factor
6	3.083	6.012	2.800	0.80

Фойе



Clearance height: 2.800 m, Reflection factors: Ceiling 70.0%, Walls 50.0%, Floor 50.0%, Maintenance factor: 0.80

Workplane

Surface	Result	Average (Target)	Min	Max	Min/average	Min/max
1 Workplane (Фойе)	Perpendicular illuminance (adaptive) [lx] Height: 0.800 m, Wall zone: 0.000 m	1894 (≥ 500)	11.8	2676	0.006	0.004

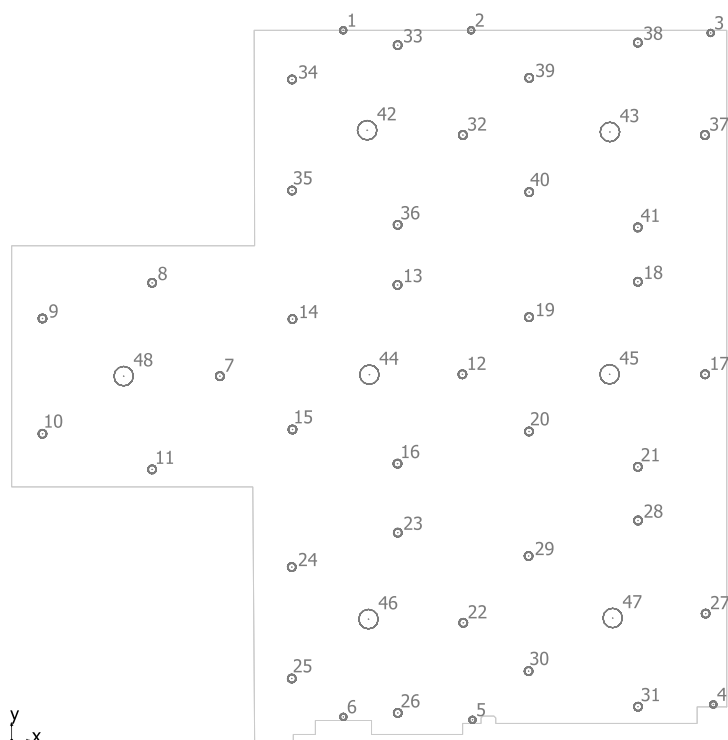
#	Luminaire	Φ(Luminaire) [lm]	Power [W]	Luminous efficacy [lm/W]
6	V-TAC - 4759 V-TAC 18W LED Panel Downlight Glass Round 6000K	1260	18.0	70.0
35	V-TAC - 5534 V-TAC 100W LED High Bay A++ 120LM/W 4500K	12000	100.0	120.0
7	V-TAC - 5537 V-TAC 150W LED High Bay A++ 120LM/W 4500K	18600	150.0	124.0
Total via all luminaires		557760	4658.0	119.7

Lighting power density: 16.30 W/m² = 0.86 W/m²/100 lx (Floor area of room 285.74 m²)

Consumption: 6200 kWh/a of maximum 10050 kWh/a

The energy consumption quantities do not take into account light scenes and their dimming levels.

Фойе



V-TAC 4759 V-TAC 18W LED Panel Downlight Glass Round 6000K

No.	X [m]	Y [m]	Mounting height [m]	Maintenance factor
1	9.006	19.290	2.800	0.80
2	12.482	19.290	2.800	0.80
3	18.988	19.219	2.800	0.80
4	19.060	0.978	2.800	0.80
5	12.518	0.562	2.800	0.80
6	9.010	0.642	2.800	0.80

V-TAC 5534 V-TAC 100W LED High Bay A++ 120LM/W 4500K

No.	X [m]	Y [m]	Mounting height [m]	Maintenance factor
7	5.656	9.897	2.800	0.80
8	3.816	12.431	2.800	0.80
9	0.837	11.463	2.800	0.80
10	0.837	8.331	2.800	0.80
11	3.816	7.363	2.800	0.80
12	12.244	9.947	2.800	0.80
13	10.481	12.374	2.800	0.80
14	7.628	11.447	2.800	0.80
15	7.628	8.447	2.800	0.80
16	10.481	7.520	2.800	0.80
17	18.836	9.947	2.800	0.80
18	17.009	12.461	2.800	0.80
19	14.054	11.501	2.800	0.80

No.	X [m]	Y [m]	Mounting height [m]	Maintenance factor
20	14.054	8.393	2.800	0.80
21	17.009	7.433	2.800	0.80
22	12.267	3.197	2.800	0.80
23	10.488	5.646	2.800	0.80
24	7.609	4.710	2.800	0.80
25	7.609	1.683	2.800	0.80
26	10.488	0.748	2.800	0.80
27	18.851	3.447	2.800	0.80
28	17.014	5.976	2.800	0.80
29	14.041	5.010	2.800	0.80
30	14.041	1.884	2.800	0.80
31	17.014	0.918	2.800	0.80
32	12.258	16.447	2.800	0.80
33	10.485	18.887	2.800	0.80
34	7.617	17.955	2.800	0.80
35	7.617	14.939	2.800	0.80
36	10.485	14.007	2.800	0.80
37	18.832	16.447	2.800	0.80
38	17.008	18.957	2.800	0.80
39	14.057	17.998	2.800	0.80
40	14.057	14.895	2.800	0.80
41	17.008	13.937	2.800	0.80

V-TAC 5537 V-TAC 150W LED High Bay A++ 120LM/W 4500K

No.	X [m]	Y [m]	Mounting height [m]	Maintenance factor
42	9.657	16.576	2.800	0.80
43	16.251	16.530	2.800	0.80
44	9.716	9.937	2.800	0.80
45	16.242	9.947	2.800	0.80
46	9.692	3.297	2.800	0.80
47	16.326	3.327	2.800	0.80
48	3.042	9.897	2.800	0.80

Content

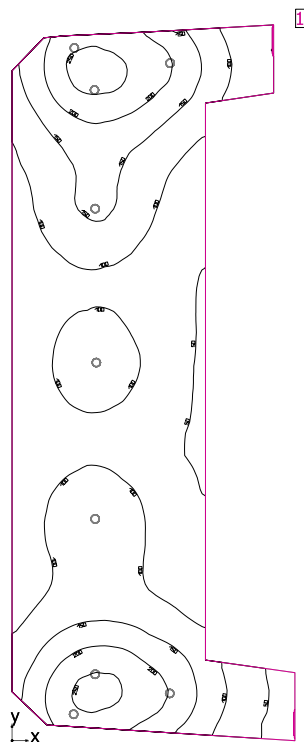
Project 3

Site 1

Building 1

Storey 1

Балкон	
Summary.....	3
Luminaire layout plan.....	4
Гримьорна	
Summary.....	5
Luminaire layout plan.....	6
Гримьорна	
Summary.....	7
Luminaire layout plan.....	8
Гримьорна	
Summary.....	9
Luminaire layout plan.....	10
Коридор	
Summary.....	11
Luminaire layout plan.....	12
Коридор	
Summary.....	13
Luminaire layout plan.....	14
Стълбище	
Summary.....	15
Luminaire layout plan.....	16

Балкон

Clearance height: 2.800 m, Reflection factors: Ceiling 70.0%, Walls 50.0%, Floor 20.0%, Maintenance factor: 0.80

Workplane

Surface	Result	Average (Target)	Min	Max	Min/average	Min/max
1 Workplane (Балкон)	Perpendicular illuminance (adaptive) [lx] Height: 0.000 m, Wall zone: 0.000 m	121 (≥ 100)	36.3	270	0.30	0.13

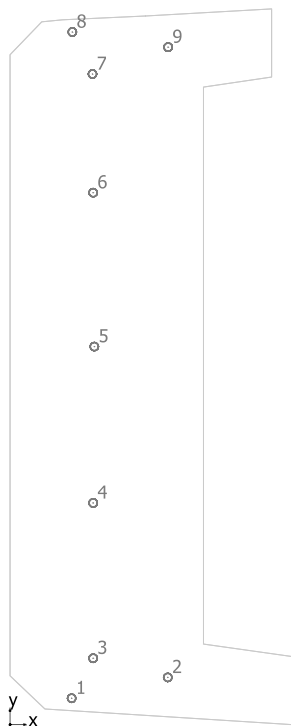
# Luminaire	Φ(Luminaire) [lm]	Power [W]	Luminous efficacy [lm/W]
9 V-TAC - 4849 V-TAC 28W LED Panel Downlight Round 4500K	2800	28.0	100.0
Total via all luminaires	25200	252.0	100.0

Lighting power density: $1.97 \text{ W/m}^2 = 1.63 \text{ W/m}^2/100 \text{ lx}$ (Floor area of room 128.02 m²)

Consumption: 280 kWh/a of maximum 4500 kWh/a

The energy consumption quantities do not take into account light scenes and their dimming levels.

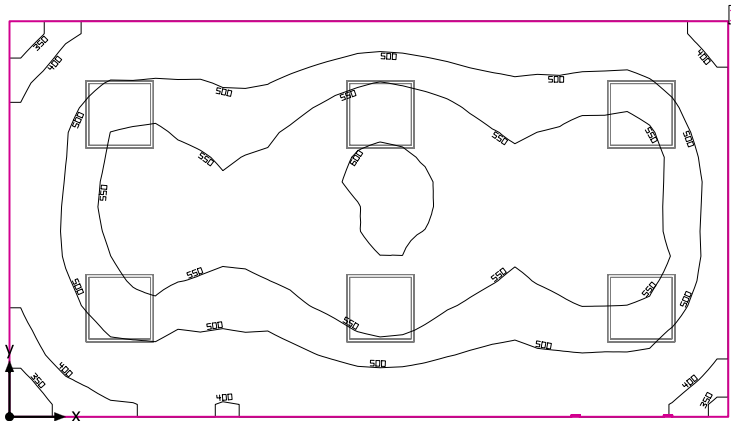
Балкон



V-TAC 4849 V-TAC 28W LED Panel Downlight Round 4500K

No.	X [m]	Y [m]	Mounting height [m]	Maintenance factor
1	1.833	0.787	2.800	0.80
2	4.693	1.407	2.800	0.80
3	2.473	1.977	2.800	0.80
4	2.473	6.597	2.800	0.80
5	2.507	11.248	2.800	0.80
6	2.473	15.827	2.800	0.80
7	2.453	19.357	2.800	0.80
8	1.853	20.607	2.800	0.80
9	4.703	20.157	2.800	0.80

Гримьорна



Clearance height: 2.800 m, Reflection factors: Ceiling 70.0%, Walls 50.0%, Floor 20.0%, Maintenance factor: 0.80

Workplane

Surface	Result	Average (Target)	Min	Max	Min/average	Min/max
1 Workplane (Гримьорна)	Perpendicular illuminance (adaptive) [lx] Height: 0.800 m, Wall zone: 0.000 m	510 (≥ 500)	315	611	0.62	0.52

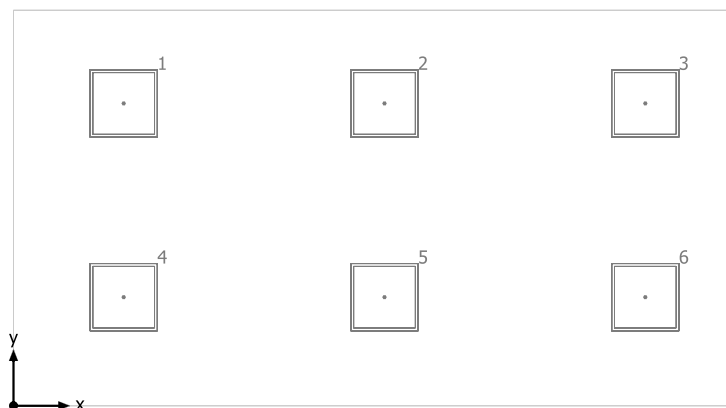
# Luminaire	Φ(Luminaire) [lm]	Power [W]	Luminous efficacy [lm/W]
6 V-TAC - 6219 V-TAC LED Panel 45W 600 x 600 mm 6000K UGR	3600	45.0	80.0
Total via all luminaires	21600	270.0	80.0

Lighting power density: $11.92 \text{ W/m}^2 = 2.34 \text{ W/m}^2/100 \text{ lx}$ (Floor area of room 22.64 m^2)

Consumption: 740 kWh/a of maximum 800 kWh/a

The energy consumption quantities do not take into account light scenes and their dimming levels.

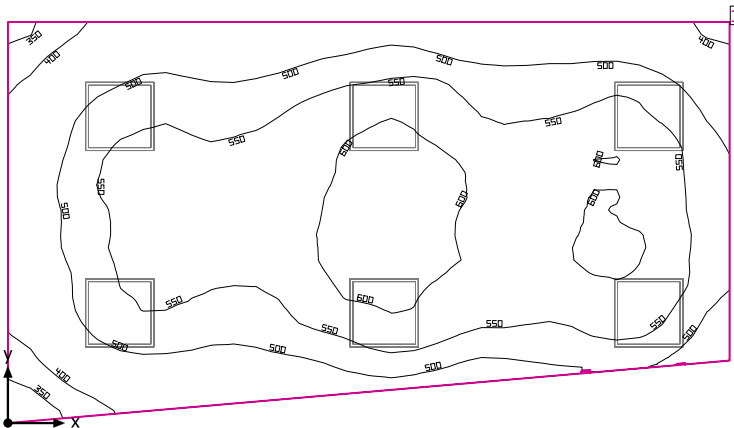
Гримъорна



V-TAC 6219 V-TAC LED Panel 45W 600 x 600 mm 6000K UGR

No.	X [m]	Y [m]	Mounting height [m]	Maintenance factor
1	0.984	2.699	2.800	0.80
2	3.311	2.699	2.800	0.80
3	5.639	2.699	2.800	0.80
4	0.984	0.969	2.800	0.80
5	3.311	0.969	2.800	0.80
6	5.639	0.969	2.800	0.80

Гримъорна



Clearance height: 2.800 m, Reflection factors: Ceiling 70.0%, Walls 50.0%, Floor 20.0%, Maintenance factor: 0.80

Workplane

Surface	Result	Average (Target)	Min	Max	Min/average	Min/max
1 Workplane (Гримъорна)	Perpendicular illuminance (adaptive) [lx] Height: 0.800 m, Wall zone: 0.000 m	530 (≥ 500)	306	628	0.58	0.49

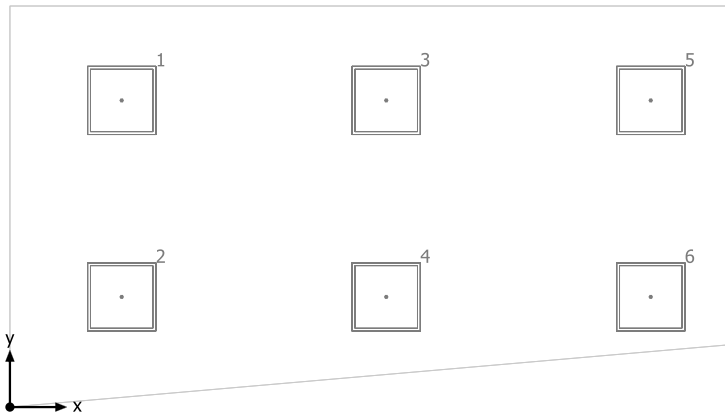
# Luminaire	Φ(Luminaire) [lm]	Power [W]	Luminous efficacy [lm/W]
6 V-TAC - 6219 V-TAC LED Panel 45W 600 x 600 mm 6000K UGR	3600	45.0	80.0
Total via all luminaires	21600	270.0	80.0

Lighting power density: $13.06 \text{ W/m}^2 = 2.47 \text{ W/m}^2/100 \text{ lx}$ (Floor area of room 20.67 m^2)

Consumption: 740 kWh/a of maximum 750 kWh/a

The energy consumption quantities do not take into account light scenes and their dimming levels.

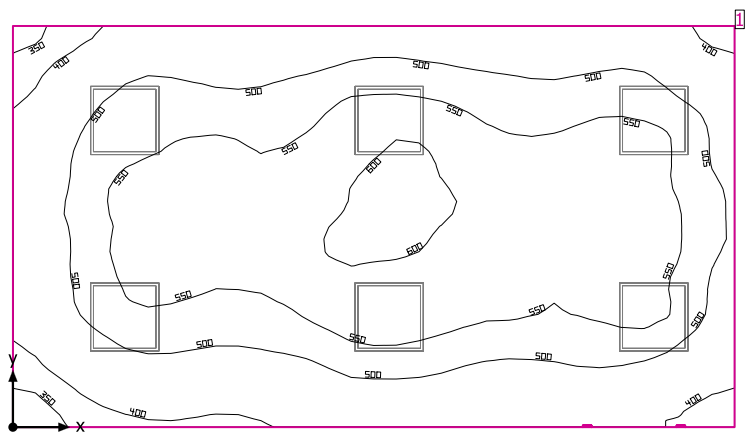
Гримьорна



V-TAC 6219 V-TAC LED Panel 45W 600 x 600 mm 6000K UGR

No.	X [m]	Y [m]	Mounting height [m]	Maintenance factor
1	0.984	2.699	2.800	0.80
2	0.984	0.969	2.800	0.80
3	3.311	2.699	2.800	0.80
4	3.311	0.969	2.800	0.80
5	5.639	2.699	2.800	0.80
6	5.639	0.969	2.800	0.80

Гримъорна



Clearance height: 2.800 m, Reflection factors: Ceiling 70.0%, Walls 50.0%, Floor 20.0%, Maintenance factor: 0.80

Workplane

Surface	Result	Average (Target)	Min	Max	Min/average	Min/max
1 Workplane (Гримъорна)	Perpendicular illuminance (adaptive) [lx] Height: 0.800 m, Wall zone: 0.000 m	513 (≥ 500)	314	617	0.61	0.51

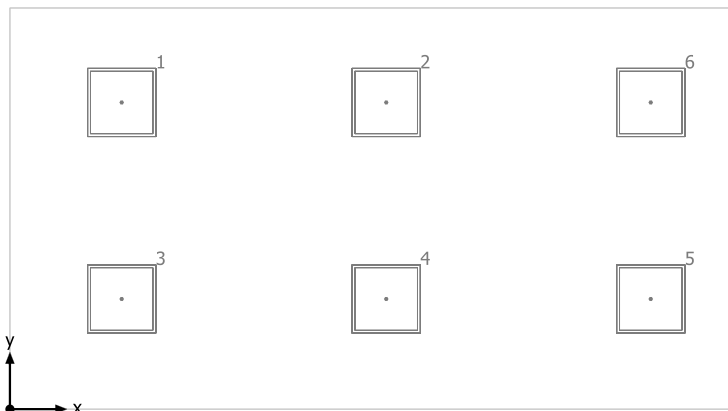
# Luminaire	Φ(Luminaire) [lm]	Power [W]	Luminous efficacy [lm/W]
6 V-TAC - 6219 V-TAC LED Panel 45W 600 x 600 mm 6000K UGR	3600	45.0	80.0
Total via all luminaires	21600	270.0	80.0

Lighting power density: 12.05 W/m² = 2.35 W/m²/100 lx (Floor area of room 22.42 m²)

Consumption: 360 kWh/a of maximum 800 kWh/a

The energy consumption quantities do not take into account light scenes and their dimming levels.

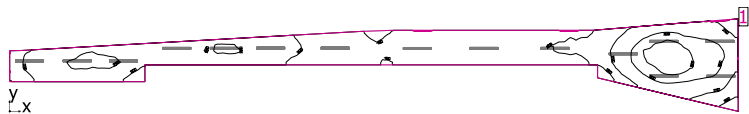
Гримьорна



V-TAC 6219 V-TAC LED Panel 45W 600 x 600 mm 6000K UGR

No.	X [m]	Y [m]	Mounting height [m]	Maintenance factor
1	0.984	2.699	2.800	0.80
2	3.311	2.699	2.800	0.80
3	0.984	0.969	2.800	0.80
4	3.311	0.969	2.800	0.80
5	5.639	0.969	2.800	0.80
6	5.639	2.699	2.800	0.80

Коридор



Clearance height: 2.800 m, Reflection factors: Ceiling 70.0%, Walls 50.0%, Floor 20.0%, Maintenance factor: 0.80

Workplane

Surface	Result	Average (Target)	Min	Max	Min/average	Min/max
1 Workplane (Коридор)	Perpendicular illuminance (adaptive) [lx] Height: 0.000 m, Wall zone: 0.000 m	230 (≥ 100)	145	342	0.63	0.42

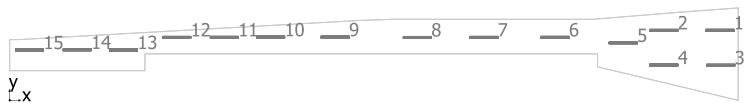
#	Luminaire	Φ(Luminaire) [lm]	Power [W]	Luminous efficacy [lm/W]
15	V-TAC - 6200 V-TAC 36W LED Waterproof Lamp 1200mm 4500K	2800	36.0	77.8
Total via all luminaires		42000	540.0	77.8

Lighting power density: 9.48 W/m² = 4.12 W/m²/100 lx (Floor area of room 56.99 m²)

Consumption: 590 kWh/a of maximum 2000 kWh/a

The energy consumption quantities do not take into account light scenes and their dimming levels.

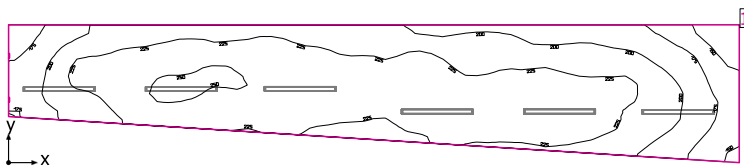
Коридор



V-TAC 6200 V-TAC 36W LED Waterproof Lamp 1200mm 4500K

No.	X [m]	Y [m]	Mounting height [m]	Maintenance factor
1	31.694	3.129	2.800	0.80
2	29.191	3.127	2.800	0.80
3	31.732	1.569	2.800	0.80
4	29.195	1.578	2.800	0.80
5	27.381	2.567	2.800	0.80
6	24.337	2.815	2.800	0.80
7	21.160	2.813	2.800	0.80
8	18.193	2.810	2.800	0.80
9	14.523	2.822	2.800	0.80
10	11.646	2.821	2.800	0.80
11	9.580	2.815	2.800	0.80
12	7.455	2.813	2.800	0.80
13	5.079	2.251	2.800	0.80
14	3.013	2.256	2.800	0.80
15	0.885	2.247	2.800	0.80

Коридор



Clearance height: 2.800 m, Reflection factors: Ceiling 70.0%, Walls 50.0%, Floor 20.0%, Maintenance factor: 0.80

Workplane

Surface	Result	Average (Target)	Min	Max	Min/average	Min/max
1 Workplane (Коридор)	Perpendicular illuminance (adaptive) [lx] Height: 0.000 m, Wall zone: 0.000 m	217 (≥ 100)	125	255	0.58	0.49

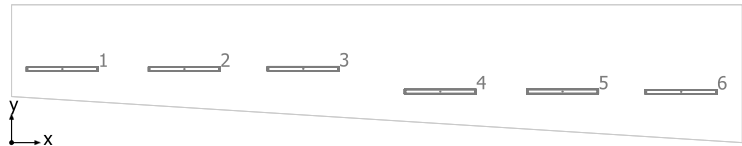
# Luminaire	Φ(Luminaire) [lm]	Power [W]	Luminous efficacy [lm/W]
6 V-TAC - 6200 V-TAC 36W LED Waterproof Lamp 1200mm 4500K	2800	36.0	77.8
Total via all luminaires	16800	216.0	77.8

Lighting power density: $8.55 \text{ W/m}^2 = 3.93 \text{ W/m}^2/100 \text{ lx}$ (Floor area of room 25.27 m^2)

Consumption: 240 kWh/a of maximum 900 kWh/a

The energy consumption quantities do not take into account light scenes and their dimming levels.

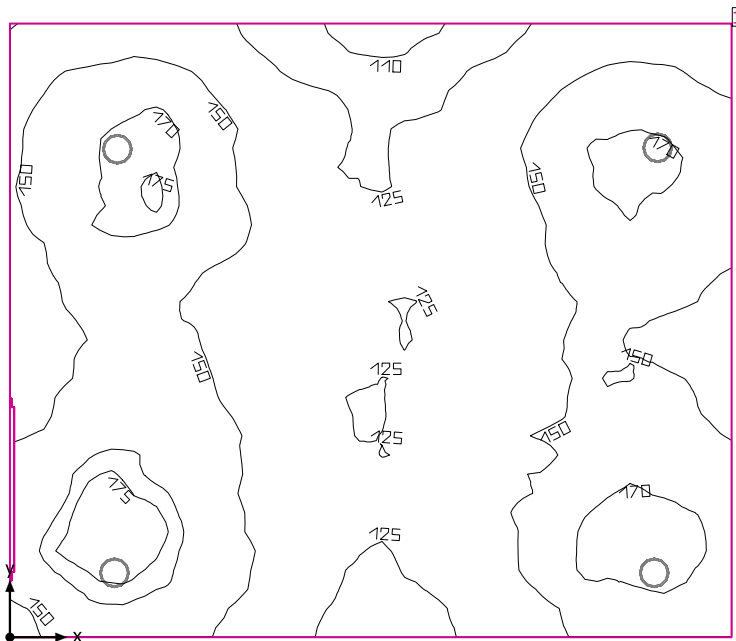
Коридор



V-TAC 6200 V-TAC 36W LED Waterproof Lamp 1200mm 4500K

No.	X [m]	Y [m]	Mounting height [m]	Maintenance factor
1	0.881	1.276	2.800	0.80
2	2.999	1.276	2.800	0.80
3	5.063	1.282	2.800	0.80
4	7.441	0.886	2.800	0.80
5	9.562	0.887	2.800	0.80
6	11.622	0.882	2.800	0.80

Стълбище



Clearance height: 2.800 m, Reflection factors: Ceiling 70.0%, Walls 50.0%, Floor 20.0%, Maintenance factor: 0.80

Workplane

Surface	Result	Average (Target)	Min	Max	Min/average	Min/max
1 Workplane (Стълбище)	Perpendicular illuminance (adaptive) [lx] Height: 0.000 m, Wall zone: 0.000 m	148 (≥ 150)	106	180	0.72	0.59

# Luminaire	Φ(Luminaire) [lm]	Power [W]	Luminous efficacy [lm/W]
4 V-TAC - 4849 V-TAC 28W LED Panel Downlight Round 4500K	2800	28.0	100.0
Total via all luminaires	11200	112.0	100.0

Lighting power density: $3.27 \text{ W/m}^2 = 2.21 \text{ W/m}^2/100 \text{ lx}$ (Floor area of room 34.29 m^2)

Consumption: 120 kWh/a of maximum 1250 kWh/a

The energy consumption quantities do not take into account light scenes and their dimming levels.

Стълбище**V-TAC 4849 V-TAC 28W LED Panel Downlight Round 4500K**

No.	X [m]	Y [m]	Mounting height [m]	Maintenance factor
1	0.945	4.294	2.800	0.80
2	5.700	4.307	2.800	0.80
3	0.920	0.567	2.800	0.80
4	5.670	0.567	2.800	0.80

Content

Project 4

Site 1

Building 1

Storey 1

Ааратна

Summary..... 3

Luminaire layout plan..... 4

Апаратна звук

Summary..... 5

Luminaire layout plan..... 6

Зрителна зала и сцена

Summary..... 7

Luminaire layout plan..... 8

Коридор

Summary..... 11

Luminaire layout plan..... 12

Коридор

Summary..... 13

Luminaire layout plan..... 14

Коридор

Summary..... 15

Luminaire layout plan..... 16

Коридор

Summary..... 17

Luminaire layout plan..... 18

Осветителна кула

Summary..... 19

Luminaire layout plan..... 20

Склад

Summary..... 21

Luminaire layout plan..... 22

Техническо

Summary..... 23

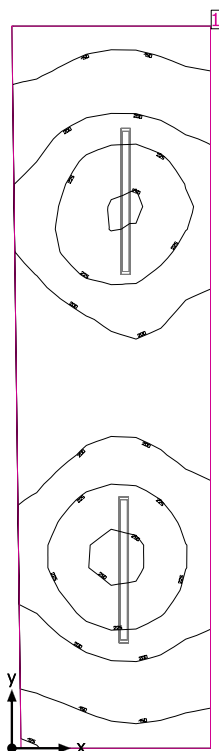
Luminaire layout plan..... 24

Тоалетна

Summary..... 25

Luminaire layout plan..... 26

Ааратна



Clearance height: 2.800 m, Reflection factors: Ceiling 70.0%, Walls 50.0%, Floor 20.0%, Maintenance factor: 0.80

Workplane

Surface	Result	Average (Target)	Min	Max	Min/average	Min/max
1 Workplane (Ааратна)	Perpendicular illuminance (adaptive) [lx] Height: 0.800 m, Wall zone: 0.000 m	198 (≥ 195)	125	254	0.63	0.49

# Luminaire	Φ(Luminaire) [lm]	Power [W]	Luminous efficacy [lm/W]
2 V-TAC - 6200 V-TAC 36W LED Waterproof Lamp 1200mm 4500K	2800	36.0	77.8
Total via all luminaires	5600	72.0	77.8

Lighting power density: $7.01 \text{ W/m}^2 = 3.55 \text{ W/m}^2/100 \text{ lx}$ (Floor area of room 10.26 m^2)

Consumption: 12 kWh/a of maximum 400 kWh/a

The energy consumption quantities do not take into account light scenes and their dimming levels.

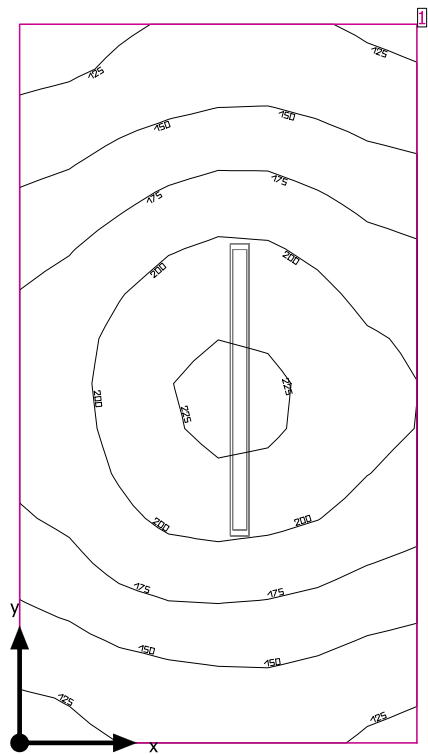
Ааратна



V-TAC 6200 V-TAC 36W LED Waterproof Lamp 1200mm 4500K

No.	X [m]	Y [m]	Mounting height [m]	Maintenance factor
1	0.974	4.680	2.800	0.80
2	0.958	1.527	2.800	0.80

Апаратна звук



Clearance height: 2.800 m, Reflection factors: Ceiling 70.0%, Walls 50.0%, Floor 20.0%, Maintenance factor: 0.80

Workplane

Surface	Result	Average (Target)	Min	Max	Min/average	Min/max
1 Workplane (Апаратна звук)	Perpendicular illuminance (adaptive) [lx] Height: 0.800 m, Wall zone: 0.000 m	174 (≥ 150)	117	230	0.67	0.51

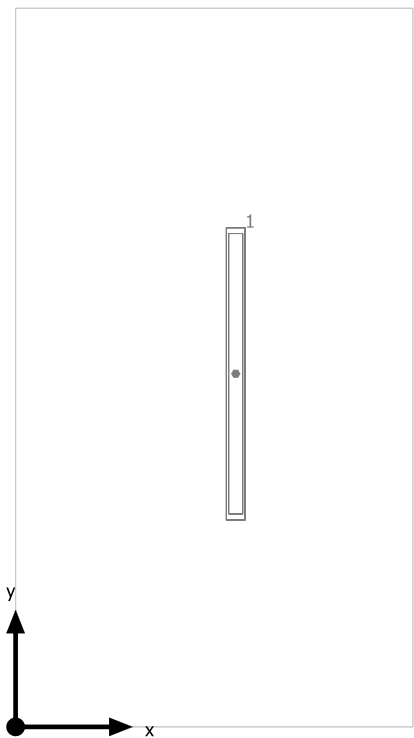
#	Luminaire	Φ(Luminaire) [lm]	Power [W]	Luminous efficacy [lm/W]
1	V-TAC - 6200 V-TAC 36W LED Waterproof Lamp 1200mm 4500K	2800	36.0	77.8
Total via all luminaires		2800	36.0	77.8

Lighting power density: 6.89 W/m² = 3.96 W/m²/100 lx (Floor area of room 5.23 m²)

Consumption: 6 kWh/a of maximum 200 kWh/a

The energy consumption quantities do not take into account light scenes and their dimming levels.

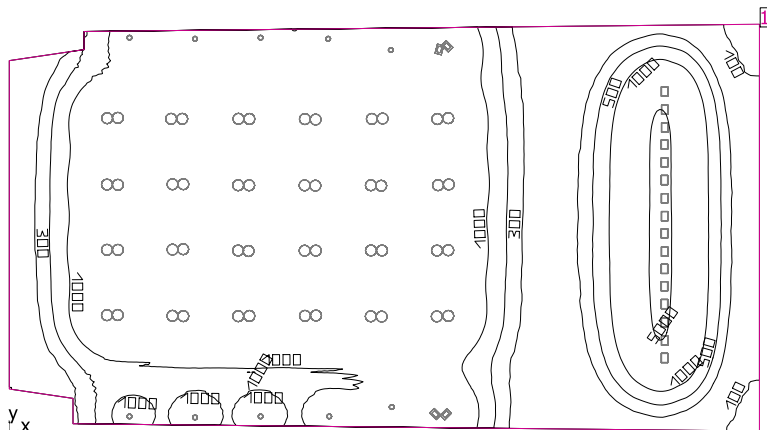
Апаратна звук



V-TAC 6200 V-TAC 36W LED Waterproof Lamp 1200mm 4500K

No.	X [m]	Y [m]	Mounting height [m]	Maintenance factor
1	0.942	1.511	2.800	0.80

Зрителна зала и сцена



Clearance height: 2.800 m, Reflection factors: Ceiling 70.0%, Walls 50.0%, Floor 20.0%, Maintenance factor: 0.80

Workplane

Surface	Result	Average (Target)	Min	Max	Min/average	Min/max
1 Workplane (Зрителна зала и сцена)	Perpendicular illuminance (adaptive) [lx] Height: 0.800 m, Wall zone: 0.000 m	1749 (≥ 750)	72.3	5852	0.041	0.012

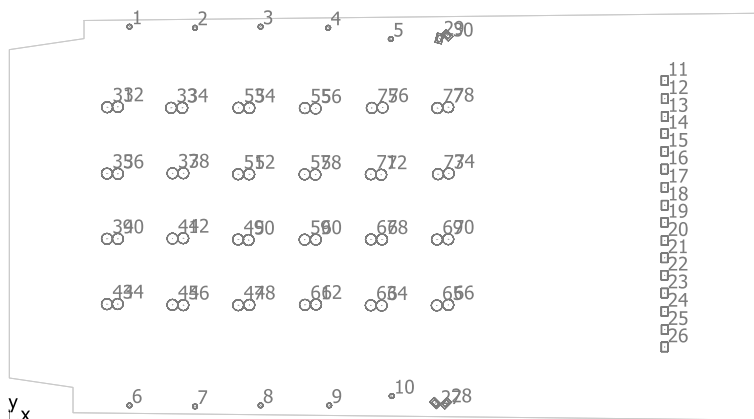
#	Luminaire	Φ(Luminaire) [lm]	Power [W]	Luminous efficacy [lm/W]
10	V-TAC - 5534 V-TAC 100W LED High Bay A++ 120LM/W 4500K	12000	100.0	120.0
48	V-TAC - 5537 V-TAC 150W LED High Bay A++ 120LM/W 4500K	18600	150.0	124.0
16	V-TAC - 5859 V-TAC 150W LED Floodlight Black/Grey 4500K	17000	150.0	113.3
4	V-TAC - 5913 V-TAC 200W LED Floodlight Grey 4500K	17000	200.0	85.0
Total via all luminaires		1352800	11400.0	118.7

Lighting power density: 16.70 W/m² = 0.96 W/m²/100 lx (Floor area of room 682.50 m²)

Consumption: 15150 kWh/a of maximum 23900 kWh/a

The energy consumption quantities do not take into account light scenes and their dimming levels.

Зрителна зала и сцена



V-TAC 5534 V-TAC 100W LED High Bay A++ 120LM/W 4500K

No.	X [m]	Y [m]	Mounting height [m]	Maintenance factor
1	5.775	18.902	2.800	0.80
2	8.925	18.852	2.800	0.80
3	12.075	18.902	2.800	0.80
4	15.325	18.852	2.800	0.80
5	18.332	18.309	2.800	0.80
6	5.775	0.702	2.800	0.80
7	8.925	0.652	2.800	0.80
8	12.075	0.702	2.800	0.80
9	15.375	0.702	2.800	0.80
10	18.375	1.152	2.800	0.80

V-TAC 5859 V-TAC 150W LED Floodlight Black/Grey 4500K

No.	X [m]	Y [m]	Mounting height [m]	Maintenance factor
11	31.490	16.317	2.800	0.80
12	31.497	15.440	2.800	0.80
13	31.497	14.587	2.800	0.80
14	31.488	13.771	2.800	0.80
15	31.489	12.911	2.800	0.80
16	31.488	12.063	2.800	0.80
17	31.492	11.187	2.800	0.80
18	31.494	10.326	2.800	0.80
19	31.488	9.501	2.800	0.80
20	31.492	8.622	2.800	0.80
21	31.488	7.794	2.800	0.80
22	31.487	6.958	2.800	0.80
23	31.487	6.102	2.800	0.80
24	31.489	5.222	2.800	0.80
25	31.495	4.345	2.800	0.80
26	31.490	3.511	2.800	0.80

V-TAC 5913 V-TAC 200W LED Floodlight Grey 4500K

No.	X [m]	Y [m]	Mounting height [m]	Maintenance factor
27	20.469	0.817	2.800	0.80
28	20.975	0.802	2.800	0.80

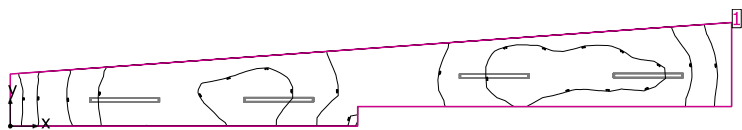
No.	X [m]	Y [m]	Mounting height [m]	Maintenance factor
29	20.667	18.338	2.800	0.80
30	21.048	18.486	2.800	0.80

V-TAC 5537 V-TAC 150W LED High Bay A++ 120LM/W 4500K

No.	X [m]	Y [m]	Mounting height [m]	Maintenance factor
31	4.702	15.033	2.800	0.80
32	5.216	15.050	2.800	0.80
33	7.775	15.002	2.800	0.80
34	8.310	15.002	2.800	0.80
35	4.694	11.843	2.800	0.80
36	5.218	11.832	2.800	0.80
37	7.843	11.856	2.800	0.80
38	8.365	11.861	2.800	0.80
39	4.694	8.708	2.800	0.80
40	5.219	8.706	2.800	0.80
41	7.842	8.720	2.800	0.80
42	8.356	8.738	2.800	0.80
43	4.693	5.569	2.800	0.80
44	5.212	5.576	2.800	0.80
45	7.839	5.537	2.800	0.80
46	8.361	5.522	2.800	0.80
47	10.999	5.520	2.800	0.80
48	11.536	5.532	2.800	0.80
49	10.997	8.675	2.800	0.80
50	11.500	8.651	2.800	0.80
51	10.997	11.812	2.800	0.80
52	11.528	11.809	2.800	0.80
53	11.011	15.006	2.800	0.80
54	11.537	14.998	2.800	0.80
55	14.206	14.992	2.800	0.80
56	14.720	14.970	2.800	0.80
57	14.189	11.805	2.800	0.80
58	14.710	11.793	2.800	0.80
59	14.191	8.669	2.800	0.80
60	14.728	8.671	2.800	0.80
61	14.210	5.535	2.800	0.80
62	14.739	5.551	2.800	0.80
63	17.372	5.512	2.800	0.80
64	17.893	5.501	2.800	0.80
65	20.542	5.507	2.800	0.80
66	21.096	5.533	2.800	0.80
67	17.380	8.678	2.800	0.80
68	17.911	8.676	2.800	0.80
69	20.555	8.672	2.800	0.80
70	21.096	8.688	2.800	0.80
71	17.377	11.812	2.800	0.80
72	17.872	11.787	2.800	0.80
73	20.603	11.815	2.800	0.80
74	21.120	11.849	2.800	0.80
75	17.425	14.998	2.800	0.80
76	17.940	15.017	2.800	0.80

No.	X [m]	Y [m]	Mounting height [m]	Maintenance factor
77	20.566	14.994	2.800	0.80
78	21.092	15.037	2.800	0.80

Коридор



Clearance height: 2.800 m, Reflection factors: Ceiling 70.0%, Walls 50.0%, Floor 20.0%, Maintenance factor: 0.80

Workplane

Surface	Result	Average (Target)	Min	Max	Min/average	Min/max
1 Workplane (Коридор)	Perpendicular illuminance (adaptive) [lx] Height: 0.000 m, Wall zone: 0.000 m	157 (≥ 100)	87.4	188	0.56	0.46

# Luminaire	Φ(Luminaire) [lm]	Power [W]	Luminous efficacy [lm/W]
4 V-TAC - 6200 V-TAC 36W LED Waterproof Lamp 1200mm 4500K	2800	36.0	77.8
Total via all luminaires	11200	144.0	77.8

Lighting power density: 9.25 W/m² = 5.88 W/m²/100 lx (Floor area of room 15.56 m²)

Consumption: 160 kWh/a of maximum 550 kWh/a

The energy consumption quantities do not take into account light scenes and their dimming levels.

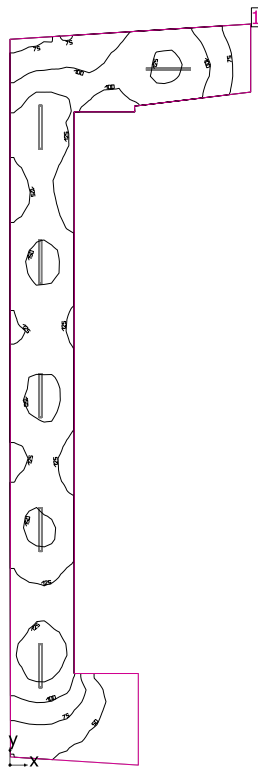
Коридор



V-TAC 6200 V-TAC 36W LED Waterproof Lamp 1200mm 4500K

No.	X [m]	Y [m]	Mounting height [m]	Maintenance factor
1	11.387	0.904	2.800	0.80
2	8.640	0.893	2.800	0.80
3	4.792	0.473	2.800	0.80
4	2.040	0.469	2.800	0.80

Коридор



Clearance height: 2.800 m, Reflection factors: Ceiling 70.0%, Walls 50.0%, Floor 20.0%, Maintenance factor: 0.80

Workplane

Surface	Result	Average (Target)	Min	Max	Min/average	Min/max
1 Workplane (Коридор)	Perpendicular illuminance (adaptive) [lx] Height: 0.000 m, Wall zone: 0.000 m	113 (≥ 100)	26.8	160	0.24	0.17

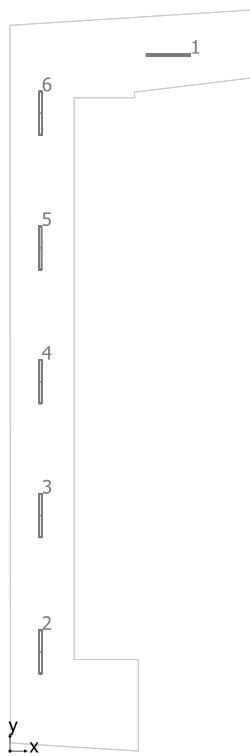
# Luminaire	Φ(Luminaire) [lm]	Power [W]	Luminous efficacy [lm/W]
6 V-TAC - 6200 V-TAC 36W LED Waterproof Lamp 1200mm 4500K	2800	36.0	77.8
Total via all luminaires	16800	216.0	77.8

Lighting power density: $4.12 \text{ W/m}^2 = 3.66 \text{ W/m}^2/100 \text{ lx}$ (Floor area of room 52.39 m^2)

Consumption: 240 kWh/a of maximum 1850 kWh/a

The energy consumption quantities do not take into account light scenes and their dimming levels.

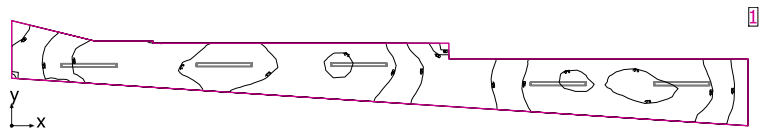
Коридор



V-TAC 6200 V-TAC 36W LED Waterproof Lamp 1200mm 4500K

No.	X [m]	Y [m]	Mounting height [m]	Maintenance factor
1	4.500	19.767	2.800	0.80
2	0.866	2.819	2.800	0.80
3	0.870	6.689	2.800	0.80
4	0.863	10.492	2.800	0.80
5	0.860	14.292	2.800	0.80
6	0.866	18.116	2.800	0.80

Коридор



Clearance height: 2.800 m, Reflection factors: Ceiling 70.0%, Walls 50.0%, Floor 20.0%, Maintenance factor: 0.80

Workplane

Surface	Result	Average (Target)	Min	Max	Min/average	Min/max
1 Workplane (Коридор)	Perpendicular illuminance (adaptive) [lx] Height: 0.000 m, Wall zone: 0.000 m	154 (≥ 100)	88.1	184	0.57	0.48

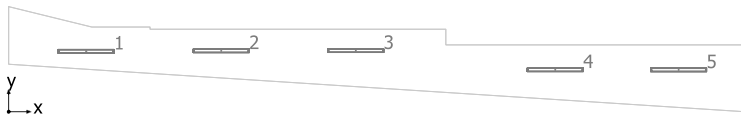
# Luminaire	Φ(Luminaire) [lm]	Power [W]	Luminous efficacy [lm/W]
5 V-TAC - 6200 V-TAC 36W LED Waterproof Lamp 1200mm 4500K	2800	36.0	77.8
Total via all luminaires	14000	180.0	77.8

Lighting power density: 9.10 W/m² = 5.91 W/m²/100 lx (Floor area of room 19.79 m²)

Consumption: 200 kWh/a of maximum 700 kWh/a

The energy consumption quantities do not take into account light scenes and their dimming levels.

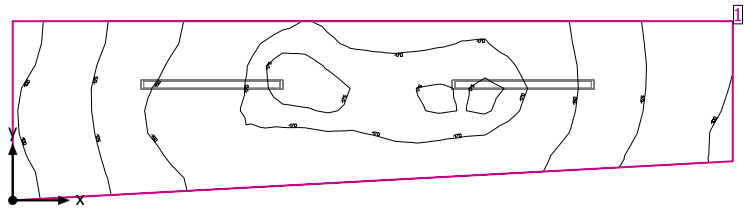
Коридор



V-TAC 6200 V-TAC 36W LED Waterproof Lamp 1200mm 4500K

No.	X [m]	Y [m]	Mounting height [m]	Maintenance factor
1	1.727	1.350	2.800	0.80
2	4.742	1.359	2.800	0.80
3	7.744	1.362	2.800	0.80
4	12.196	0.936	2.800	0.80
5	14.949	0.934	2.800	0.80

Коридор



Clearance height: 2.800 m, Reflection factors: Ceiling 70.0%, Walls 50.0%, Floor 20.0%, Maintenance factor: 0.80

Workplane

Surface	Result	Average (Target)	Min	Max	Min/average	Min/max
1 Workplane (Коридор)	Perpendicular illuminance (adaptive) [lx] Height: 0.000 m, Wall zone: 0.000 m	147 (≥ 100)	95.9	178	0.65	0.54

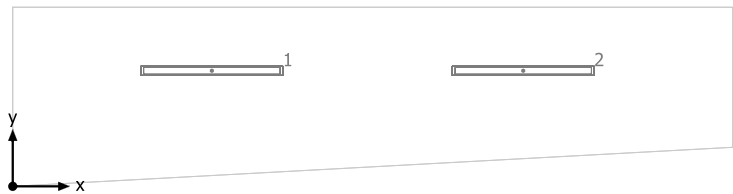
#	Luminaire	Φ(Luminaire) [lm]	Power [W]	Luminous efficacy [lm/W]
2	V-TAC - 6200 V-TAC 36W LED Waterproof Lamp 1200mm 4500K	2800	36.0	77.8
Total via all luminaires		5600	72.0	77.8

Lighting power density: 8.09 W/m² = 5.50 W/m²/100 lx (Floor area of room 8.90 m²)

Consumption: 79 kWh/a of maximum 350 kWh/a

The energy consumption quantities do not take into account light scenes and their dimming levels.

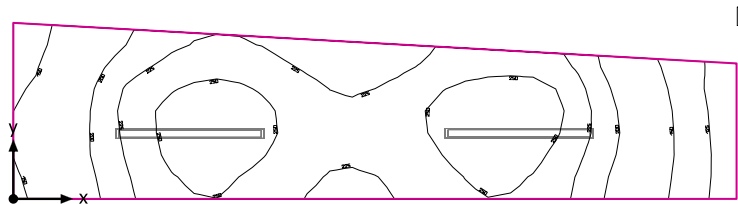
Коридор



V-TAC 6200 V-TAC 36W LED Waterproof Lamp 1200mm 4500K

No.	X [m]	Y [m]	Mounting height [m]	Maintenance factor
1	1.752	1.017	2.800	0.80
2	4.492	1.017	2.800	0.80

Осветителна кула



Clearance height: 2.800 m, Reflection factors: Ceiling 70.0%, Walls 50.0%, Floor 20.0%, Maintenance factor: 0.80

Workplane

Surface	Result	Average (Target)	Min	Max	Min/average	Min/max
1 Workplane (Осветителна кула)	Perpendicular illuminance (adaptive) [lx] Height: 0.800 m, Wall zone: 0.000 m	216 (≥ 200)	117	270	0.54	0.43

#	Luminaire	Φ(Luminaire) [lm]	Power [W]	Luminous efficacy [lm/W]
2	V-TAC - 6200 V-TAC 36W LED Waterproof Lamp 1200mm 4500K	2800	36.0	77.8
Total via all luminaires		5600	72.0	77.8

Lighting power density: 8.97 W/m² = 4.15 W/m²/100 lx (Floor area of room 8.03 m²)

Consumption: 12 kWh/a of maximum 300 kWh/a

The energy consumption quantities do not take into account light scenes and their dimming levels.

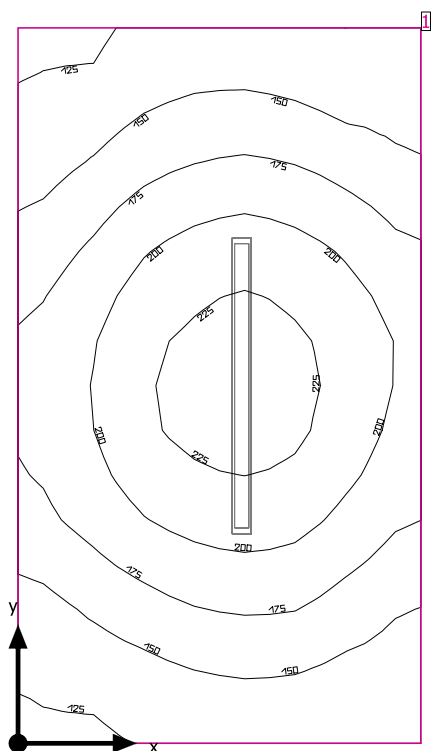
Осветителна кула



V-TAC 6200 V-TAC 36W LED Waterproof Lamp 1200mm 4500K

No.	X [m]	Y [m]	Mounting height [m]	Maintenance factor
1	4.270	0.554	2.800	0.80
2	1.492	0.551	2.800	0.80

Склад



Clearance height: 2.800 m, Reflection factors: Ceiling 70.0%, Walls 50.0%, Floor 20.0%, Maintenance factor: 0.80

Workplane

Surface	Result	Average (Target)	Min	Max	Min/average	Min/max
1 Workplane (Склад)	Perpendicular illuminance (adaptive) [lx] Height: 0.800 m, Wall zone: 0.000 m	176 (≥ 100)	120	235	0.68	0.51

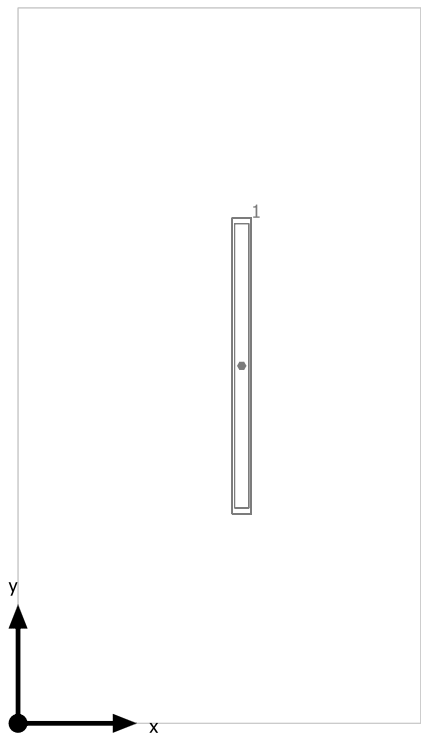
# Luminaire	Φ(Luminaire) [lm]	Power [W]	Luminous efficacy [lm/W]
1 V-TAC - 6200 V-TAC 36W LED Waterproof Lamp 1200mm 4500K	2800	36.0	77.8
Total via all luminaires	2800	36.0	77.8

Lighting power density: $7.01 \text{ W/m}^2 = 3.98 \text{ W/m}^2/100 \text{ lx}$ (Floor area of room 5.13 m^2)

Consumption: 6 kWh/a of maximum 200 kWh/a

The energy consumption quantities do not take into account light scenes and their dimming levels.

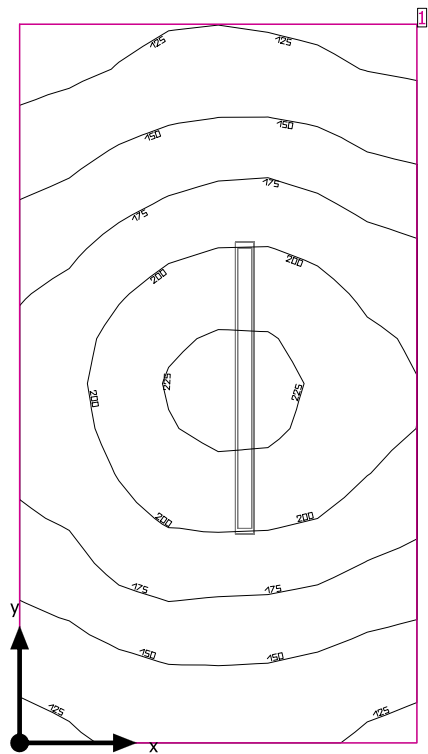
Склад



V-TAC 6200 V-TAC 36W LED Waterproof Lamp 1200mm 4500K

No.	X [m]	Y [m]	Mounting height [m]	Maintenance factor
1	0.944	1.509	2.800	0.80

Техническо



Clearance height: 2.800 m, Reflection factors: Ceiling 70.0%, Walls 50.0%, Floor 20.0%, Maintenance factor: 0.80

Workplane

Surface	Result	Average (Target)	Min	Max	Min/average	Min/max
1 Workplane (Техническо)	Perpendicular illuminance (adaptive) [lx] Height: 0.800 m, Wall zone: 0.000 m	173 (≥ 150)	114	231	0.66	0.49

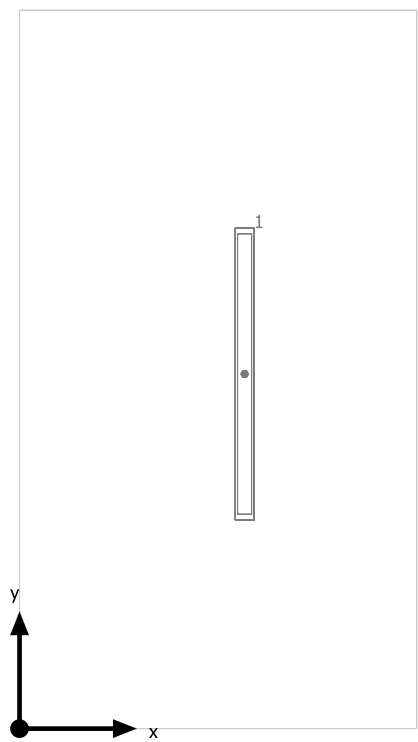
#	Luminaire	Φ(Luminaire) [lm]	Power [W]	Luminous efficacy [lm/W]
1	V-TAC - 6200 V-TAC 36W LED Waterproof Lamp 1200mm 4500K	2800	36.0	77.8
Total via all luminaires		2800	36.0	77.8

Lighting power density: 6.89 W/m² = 3.98 W/m²/100 lx (Floor area of room 5.23 m²)

Consumption: 6 kWh/a of maximum 200 kWh/a

The energy consumption quantities do not take into account light scenes and their dimming levels.

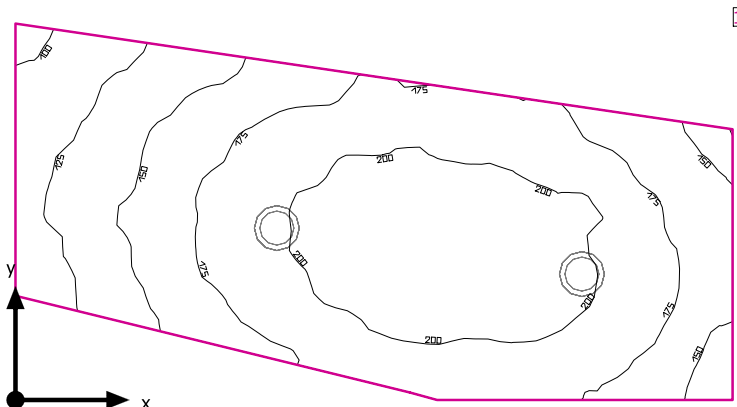
Техническо



V-TAC 6200 V-TAC 36W LED Waterproof Lamp 1200mm 4500K

No.	X [m]	Y [m]	Mounting height [m]	Maintenance factor
1	0.964	1.518	2.800	0.80

Тоалетна



Clearance height: 2.800 m, Reflection factors: Ceiling 70.0%, Walls 50.0%, Floor 20.0%, Maintenance factor: 0.80

Workplane

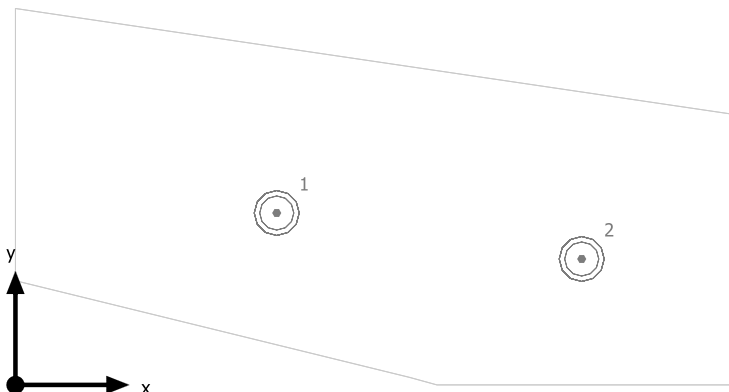
Surface	Result	Average (Target)	Min	Max	Min/average	Min/max
1 Workplane (Тоалетна)	Perpendicular illuminance (adaptive) [lx] Height: 0.800 m, Wall zone: 0.000 m	174 (≥ 150)	94.2	215	0.54	0.44

# Luminaire	Φ(Luminaire) [lm]	Power [W]	Luminous efficacy [lm/W]
2 V-TAC - 4759 V-TAC 18W LED Panel Downlight Glass Round 6000K	1260	18.0	70.0
Total via all luminaires	2520	36.0	70.0

Lighting power density: $8.86 \text{ W/m}^2 = 5.08 \text{ W/m}^2/100 \text{ lx}$ (Floor area of room 4.07 m^2)

Consumption: 30 kWh/a of maximum 150 kWh/a

The energy consumption quantities do not take into account light scenes and their dimming levels.

Тоалетна**V-TAC 4759 V-TAC 18W LED Panel Downlight Glass Round 6000K**

No.	X [m]	Y [m]	Mounting height [m]	Maintenance factor
1	1.150	0.757	2.800	0.80
2	2.492	0.554	2.800	0.80